

---

# **GA4GH Variation Representation Specification**

*Release 1.0.0-rc.2-43-g9951de5*

**Aug 20, 2019**



---

# Contents

---

<b>1</b>	<b>Introduction</b>	<b>3</b>
<b>2</b>	<b>Terminology &amp; Information Model</b>	<b>5</b>
2.1	Data Model Notes and Principles . . . . .	6
2.2	Optional Attributes . . . . .	6
2.3	Primitive Concepts . . . . .	6
2.4	Composite Concepts . . . . .	8
<b>3</b>	<b>Schema</b>	<b>15</b>
3.1	Overview . . . . .	15
3.2	Machine Readable Specifications . . . . .	15
<b>4</b>	<b>Implementation Guide</b>	<b>17</b>
4.1	Required External Data . . . . .	17
4.2	Normalization . . . . .	19
4.3	Computed Identifiers . . . . .	22
4.4	Example . . . . .	26
<b>5</b>	<b>Appendices</b>	<b>31</b>
5.1	Associating Annotations with VR Objects . . . . .	31
5.2	Design Decisions . . . . .	34
5.3	Development Process . . . . .	36
5.4	Future Plans . . . . .	38
5.5	Proposal for GA4GH-wide Computed Identifier Standard . . . . .	45
5.6	Implementations . . . . .	46
5.7	Truncated Digest Collision Analysis . . . . .	48
	<b>Bibliography</b>	<b>55</b>



The Variation Representation Specification (VR-Spec) is a standard developed by the Global Alliance for Genomic Health to facilitate and improve sharing of genetic information. The Specification consists of a JSON Schema for representing many classes of genetic variation, conventions to maximize the utility of the schema, and a Python implementation that promotes adoption of the standard.



Maximizing the personal, public, research, and clinical value of genomic information will require that clinicians, researchers, and testing laboratories exchange genetic variation data reliably. The Variation Representation Specification (VR-Spec) — written by a partnership among national information resource providers, major public initiatives, and diagnostic testing laboratories — is an open specification to standardize the exchange of variation data.

Here we document the primary contributions of this specification for variation representation:

- **Terminology and information model.** Definitions for biological terms may be abstract or intentionally ambiguous, often accurately reflecting scientific uncertainty or understanding at the time. Abstract and ambiguous terms are not readily translatable into a representation of knowledge. Therefore, the specification begins with precise computational definitions for biological concepts that are essential to representing sequence variation. The VR-Spec information model specifies how the computational definitions are to be represented in fields, semantics, objects, and object relationships.
- **Machine readable schema.** To be useful for information exchange, the information model should be realized in a schema definition language. The VR-Spec schema is currently implemented using JSON Schema, however it is intended to support translations to other schema systems (e.g. XML, OpenAPI, and GraphQL). The schema repository includes language-agnostic tests for ensuring schema compliance in downstream implementations.
- **Conventions that promote reliable data sharing.** The VR-Spec recommends conventions regarding the use of the schema and that facilitate data sharing. For example, the VR-Spec recommends using fully justified allele normalization using an algorithm inspired by [NCBI's SPDI project](#).
- **Globally unique computed identifiers.** This specification also recommends a specific algorithm for constructing distributed and globally-unique identifiers for molecular variation. Importantly, this algorithm enables data providers and consumers to computationally generate consistent, globally unique identifiers for variation without a central authority.
- **A Python implementation.** We provide a Python package (`vr-python`) that demonstrates the above schema and algorithms, and supports translation of existing variant representation schemes into VR-Spec for use in genomic data sharing. It may be used as the basis for development in Python, but it is not required in order to use the VR Specification.

The machine readable schema definitions and example code are available online at the VR-Spec repository (<https://github.com/ga4gh/vr-spec>).

Readers may wish to view a *complete example* before reading the specification.



---

### Terminology & Information Model

---

When biologists define terms in order to describe phenomena and observations, they rely on a background of human experience and intelligence for interpretation. Definitions may be abstract, perhaps correctly reflecting uncertainty of our understanding at the time. Unfortunately, such terms are not readily translatable into an unambiguous representation of knowledge.

For example, “allele” might refer to “an alternative form of a gene or locus” [Wikipedia], “one of two or more forms of the DNA sequence of a particular gene” [ISOGG], or “one of a set of coexisting sequence alleles of a gene” [Sequence Ontology]. Even for human interpretation, these definitions are inconsistent: does the definition precisely describe a specific change on a specific sequence, or, rather, a more general change on an undefined sequence? In addition, all three definitions are inconsistent with the practical need for a way to describe sequence changes outside regions associated with genes.

**The computational representation of biological concepts requires translating precise biological definitions into data structures that can be used by implementers.** This translation should result in a representation of information that is consistent with conventional biological understanding and, ideally, be able to accommodate future data as well. The resulting *computational representation* of information should also be cognizant of computational performance, the minimization of opportunities for misunderstanding, and ease of manipulating and transforming data.

Accordingly, for each term we define below, we begin by describing the term as used by biologists (**biological definition**) as available. When a term has multiple biological definitions, we explicitly choose one of them for the purposes of this specification. We then provide a computer modelling definition (**computational definition**) that reformulates the biological definition in terms of information content. We then translate each of these computational definitions into precise specifications for the (**logical model**). Terms are ordered “bottom-up” so that definitions depend only on previously-defined terms.

---

**Note:** The keywords “MUST”, “MUST NOT”, “REQUIRED”, “SHALL”, “SHALL NOT”, “SHOULD”, “SHOULD NOT”, “RECOMMENDED”, “MAY”, and “OPTIONAL” in this document are to be interpreted as described in RFC 2119.

---

## 2.1 Data Model Notes and Principles

- VR uses *snake\_case* to represent compound words. Although the schema is currently JSON-based (which would typically use camelCase), VR itself is intended to be neutral with respect to languages and database.
- VR objects are *value objects*. Two objects are considered equal if and only if their respective attributes are equal. As value objects, VR objects are used as primitive types and SHOULD NOT be used as containers for related data. Instead, related data should be associated with VR objects through identifiers. See *Computed Identifiers*.
- Error handling is intentionally unspecified and delegated to implementation. The VR-Spec provides foundational data types that enable significant flexibility. Except where required by this specification, implementations may choose whether and how to validate data. For example, implementations MAY choose to validate that particular combinations of objects are compatible, but such validation is not required.
- We recognize that a common desire may be to have human-readable identifiers associated with VR objects. We recommend using the *\_id* field (see *Optional Attributes* below) to create a lookup for any such identifiers (see *example usage*), and provide reference methods for creating VR identifiers from other common variant formats (see the *HGVS translation example*).

## 2.2 Optional Attributes

- VR attributes use a leading underscore to represent optional attributes that are not part of the value object. Such attributes are not considered when evaluating equality or creating computed identifiers. Currently, the only such attribute in the specification is the *\_id* attribute.
- The *\_id* attribute is available to identifiable objects, and MAY be used by an implementation to store the identifier for a VR object. If used, the stored *\_id* element MUST be a *CURIE*. If used for creating a *Truncated Digest* (*sha512t24u*) for parent objects, the stored element must be a *GA4GH Computed Identifier*.

## 2.3 Primitive Concepts

### 2.3.1 CURIE

#### Biological definition

None.

#### Computational definition

A *CURIE* formatted string. A CURIE string has the structure `prefix:reference` (W3C Terminology).

#### Implementation guidance

- All identifiers in VR-Spec MUST be a valid *Compact URI (CURIE)*, regardless of whether the identifier refers to GA4GH VR objects or external data.
- For GA4GH VR Objects, this specification RECOMMENDS using globally unique *Computed Identifiers* for use within *and* between systems.
- For external data, CURIE-formatted identifiers MUST be used. When an appropriate namespace exists at *identifiers.org*, that namespace MUST be used. When an appropriate namespace does not exist at *identifiers.org*, support is implementation-dependent. That is, implementations MAY choose whether and how to support informal or local namespaces.
- Implementations MUST use CURIE identifiers verbatim and MUST NOT be modified in any way (e.g., case-folding). Implementations MUST NOT expose partial (parsed) identifiers to any client.

**Example**

Identifiers for GRCh38 chromosome 19:

```
ga4gh:SQ.IIB53T8CNeJJdUqzn9V_JnRtQadwWcb1
refseq:NC_000019.10
grch38:19
```

See *Identifier Construction* for examples of CURIE-based identifiers for VR objects.

**2.3.2 Residue****Biological definition**

A residue refers to a specific monomer within the polymeric chain of a protein or nucleic acid (Source: [Wikipedia Residue page](#)).

**Computational definition**

A character representing a specific residue (i.e., molecular species) or groupings of these (“ambiguity codes”), using one-letter IUPAC abbreviations for nucleic acids and amino acids.

**2.3.3 Sequence****Biological definition**

A contiguous, linear polymer of nucleic acid or amino acid residues.

**Computational definition**

A character string of *Residues* that represents a biological sequence using the conventional sequence order (5'-to-3' for nucleic acid sequences, and amino-to-carboxyl for amino acid sequences). IUPAC ambiguity codes are permitted in Sequences.

**Information model**

A Sequence is a string, constrained to contain only characters representing IUPAC nucleic acid or amino acid codes.

**Implementation guidance**

- Sequences MAY be empty (zero-length) strings. Empty sequences are used as the replacement Sequence for deletion Alleles.
- Sequences MUST consist of only uppercase IUPAC abbreviations, including ambiguity codes.
- A Sequence provides a stable coordinate system by which an *Allele* MAY be located and interpreted.
- A Sequence MAY have several roles. A “reference sequence” is any Sequence used to define an *Allele*. A Sequence that replaces another Sequence is called a “replacement sequence”.
- In some contexts outside the VR specification, “reference sequence” may refer to a member of set of sequences that comprise a genome assembly. In the VR specification, any sequence may be a “reference sequence”, including those in a genome assembly.
- For the purposes of representing sequence variation, it is not necessary that Sequences be explicitly “typed” (i.e., DNA, RNA, or AA).

## 2.4 Composite Concepts

### 2.4.1 Interval (Abstract Class)

#### Biological definition

None.

#### Computational definition

The *Interval* abstract class defines a range on a *Sequence*, possibly with length zero, and specified using *Interbase Coordinates*. An *Interval* MAY be a *SimpleInterval* with a single start and end coordinate. *Future Location and Interval types* will enable other methods for describing where *Variation* occurs. Any of these MAY be used as the *Interval* for *Location*.

#### VR Uses Interbase Coordinates

**GA4GH VR uses interbase coordinates when referring to spans of sequence.**

Interbase coordinates refer to the zero-width points before and after *residues*. An interval of interbase coordinates permits referring to any span, including an empty span, before, within, or after a sequence. See *Interbase Coordinates* for more details on this design choice. Interbase coordinates are always zero-based.

#### SimpleInterval

#### Computational definition

An *Interval (Abstract Class)* with a single start and end coordinate.

#### Information model

Field	Type	Limits	Description
type	string	1..1	Interval type; MUST be set to 'SimpleInterval'
start	uint64	1..1	start position
end	uint64	1..1	end position

#### Implementation guidance

- Implementations MUST enforce values  $0 \leq \text{start} \leq \text{end}$ . In the case of double-stranded DNA, this constraint holds even when a feature is on the complementary strand.
- VR uses Interbase coordinates because they provide conceptual consistency that is not possible with residue-based systems (see *rationale*). Implementations will need to convert between interbase and 1-based inclusive residue coordinates familiar to most human users.
- Interbase coordinates start at 0 (zero).
- The length of an interval is  $\text{end} - \text{start}$ .
- An interval in which  $\text{start} == \text{end}$  is a zero width point between two residues.
- An interval of length  $== 1$  MAY be colloquially referred to as a position.
- Two intervals are *equal* if their start and end coordinates are equal.
- Two intervals *intersect* if the start or end coordinate of one is strictly between the start and end coordinates of the other. That is, if:

- $b.start < a.start < b.end$  OR
- $b.start < a.end < b.end$  OR
- $a.start < b.start < a.end$  OR
- $a.start < b.end < a.end$
- Two intervals  $a$  and  $b$  *coincide* if they intersect or if they are equal (the equality condition is REQUIRED to handle the case of two identical zero-width Intervals).
- $\langle start, end \rangle = \langle 0, 0 \rangle$  refers to the point with width zero before the first residue.
- $\langle start, end \rangle = \langle i, i+1 \rangle$  refers to the  $i+1$ th (1-based) residue.
- $\langle start, end \rangle = \langle N, N \rangle$  refers to the position after the last residue for Sequence of length  $N$ .
- See example notebooks in [GA4GH VR Python Implementation](#).

**Example**

```
{
  "end": 44908822,
  "start": 44908821,
  "type": "SimpleInterval"
}
```

## 2.4.2 Location (Abstract Class)

**Biological definition**

As used by biologists, the precision of “location” (or “locus”) varies widely, ranging from precise start and end numerical coordinates defining a Location, to bounded regions of a sequence, to conceptual references to named genomic features (e.g., chromosomal bands, genes, exons) as proxies for the Locations on an implied reference sequence.

**Computational definition**

The *Location* abstract class refers to position of a contiguous segment of a biological sequence. The most common and concrete Location is a *SequenceLocation*, i.e., a Location based on a named sequence and an Interval on that sequence. Additional *Intervals and Locations* may also be conceptual or symbolic locations, such as a cytoband region or a gene. Any of these may be used as the Location for Variation.

**Implementation Guidance**

- Location refers to a position. Although it MAY imply a sequence, the two concepts are not interchangeable, especially when the location is non-specific (e.g., a range) or symbolic (a gene).

**SequenceLocation****Biological definition**

None

**Computational definition**

A Location subclass for describing a defined *Interval (Abstract Class)* over a named *Sequence*.

**Information model**

Field	Type	Limits	Description
_id	<i>CURIE</i>	0..1	Location Id; MUST be unique within document
type	string	1..1	Location type; MUST be set to ' <b>SequenceLocation</b> '
sequence_id	<i>CURIE</i>	1..1	An id mapping to the <i>Computed Identifiers</i> of the external database Sequence containing the sequence to be located.
interval	<i>Interval (Abstract Class)</i>	1..1	Position of feature on reference sequence specified by sequence_id.

### Implementation guidance

- For a *Sequence* of length  $n$ :
  - 0 *interval.start interval.end*  $n$
  - interbase coordinate 0 refers to the point before the start of the Sequence
  - interbase coordinate  $n$  refers to the point after the end of the Sequence.
- Coordinates MUST refer to a valid Sequence. VR does not support referring to intronic positions within a transcript sequence, extrapolations beyond the ends of sequences, or other implied sequence.

**Important:** HGVS permits variants that refer to non-existent sequence. Examples include coordinates extrapolated beyond the bounds of a transcript and intronic sequence. Such variants are not representable using VR and MUST be projected to a genomic reference in order to be represented.

### Example

```
{
  "interval": {
    "end": 44908822,
    "start": 44908821,
    "type": "SimpleInterval"
  },
  "sequence_id": "ga4gh:SQ.IIB53T8CNeJJdUqzn9V_JnRtQadwWCb1",
  "type": "SequenceLocation"
}
```

## 2.4.3 State (Abstract Class)

### Biological definition

None.

### Computational definition

*State* objects are one of two primary components specifying a VR *Allele* (in addition to *Location (Abstract Class)*), and the designated components for representing change (or non-change) of the features indicated by the Allele Location. As an abstract class, State may encompass concrete *Sequence* changes (see *SequenceState*), complex translocations, copy number changes, expression variation, rule-based variation, and more (see *State Classes*).

### SequenceState

### Biological definition

None.

### Computational definition

The *SequenceState* class specifically captures a *Sequence* as a *State (Abstract Class)*. This is the State class to use for representing “ref-alt” style variation, including SNVs, MNVs, del, ins, and delins.

### Information model

Field	Type	Limits	Description
type	string	1..1	State type; MUST be set to ‘ <b>SequenceState</b> ’
sequence	string	1..1	The string of sequence residues that is to be used as the state for other types.

### Example

```
{
  "sequence": "T",
  "type": "SequenceState"
}
```

## 2.4.4 Variation

### Biological definition

In biology, variation is often used to mean *genetic variation*, describing the differences observed in DNA among individuals.

### Computational definition

The *Variation* abstract class is the top-level object in the *VR Schema Diagram* and represents the concept of a molecular state. The representation and types of molecular states are widely varied, and there are several *Variation Classes* currently under consideration to capture this diversity. The primary Variation subclass defined by the VR 1.0 specification is the *Allele*, with the *Text* subclass for capturing other Variations that are not yet covered.

### Allele

#### Biological definition

One of a number of alternative forms of the same gene or same genetic locus. In the context of biological sequences, “allele” refers to one of a set of specific changes within a *Sequence*. In the context of VR, Allele refers to a Sequence or Sequence change with respect to a reference sequence, without regard to genes or other features.

#### Computational definition

An Allele is a specific, single, and contiguous *Sequence* at a *Location (Abstract Class)*. Each alternative Sequence may be empty, shorter, longer, or the same length as the interval (e.g., due to one or more indels).

#### Information model

Field	Type	Limits	Description
_id	<i>CURIE</i>	0..1	Variation Id; MUST be unique within document
type	string	1..1	Variation type; MUST be set to ‘ <b>Allele</b> ’
location	<i>Location (Abstract Class)</i>	1..1	Where Allele is located
state	<i>State (Abstract Class)</i>	1..1	State at location

### Implementation guidance

- Implementations MUST enforce values `interval.end` `sequence_length` when the Sequence length is known.
- Alleles are equal only if the component fields are equal: at the same location and with the same state.
- Alleles MAY have multiple related representations on the same Sequence type due to normalization differences.
- Implementations SHOULD normalize Alleles using “*justified*” normalization whenever possible to facilitate comparisons of variation in regions of representational ambiguity.
- Implementations MUST normalize Alleles using “*justified*” normalization when generating a *Computed Identifiers*.
- When the alternate Sequence is the same length as the interval, the lengths of the reference Sequence and imputed Sequence are the same. (Here, imputed sequence means the sequence derived by applying the Allele to the reference sequence.) When the replacement Sequence is shorter than the length of the interval, the imputed Sequence is shorter than the reference Sequence, and conversely for replacements that are larger than the interval.
- When the replacement is “” (the empty string), the Allele refers to a deletion at this location.
- The Allele entity is based on Sequence and is intended to be used for intragenic and extragenic variation. Alleles are not explicitly associated with genes or other features.
- Biologically, referring to Alleles is typically meaningful only in the context of empirical alternatives. For modelling purposes, Alleles MAY exist as a result of biological observation or computational simulation, i.e., virtual Alleles.
- “Single, contiguous” refers the representation of the Allele, not the biological mechanism by which it was created. For instance, two non-adjacent single residue Alleles could be represented by a single contiguous multi-residue Allele.
- The terms “allele” and “variant” are often used interchangeably, although this use may mask subtle distinctions made by some users.
  - In the genetics community, “allele” may also refer to a haplotype.
  - “Allele” connotes a state whereas “variant” connotes a change between states. This distinction makes it awkward to use variant to refer to the concept of an unchanged position in a Sequence and was one of the factors that influenced the preference of “Allele” over “Variant” as the primary subject of annotations.
  - See *Use “Allele” rather than “Variant”* for further details.
- When a trait has a known genetic basis, it is typically represented computationally as an association with an Allele.
- This specification’s definition of Allele applies to all Sequence types (DNA, RNA, AA).

### Example

```
{
  "location": {
    "interval": {
      "end": 44908822,
      "start": 44908821,
      "type": "SimpleInterval"
    },
    "sequence_id": "ga4gh:SQ.IIB53T8CNeJJdUqzn9V_JnRtQadwWCbl",
    "type": "SequenceLocation"
  },
  "state": {
    "sequence": "T",
    "type": "SequenceState"
  }
}
```

(continues on next page)



(continued from previous page)

```

    },
    "type": "Allele"
  }

```

## Text

### Biological definition

None

### Computational definition

The *Text* subclass of *Variation* is intended to capture textual descriptions of variation that cannot be parsed by other Variation subclasses, but are still treated as variation.

### Information model

Field	Type	Limits	Description
<code>_id</code>	<i>CURIE</i>	0..1	Variation Id; MUST be unique within document
<code>type</code>	string	1..1	Variation type; MUST be set to <b>'Text'</b>
<code>definition</code>	string	1..1	The textual variation representation not parsable by other subclasses of Variation.

### Implementation guidance

- An implementation MUST represent Variation with subclasses other than Text if possible.
- An implementation SHOULD define or adopt conventions for defining the strings stored in Text.definition.
- If a future version of VR-Spec is adopted by an implementation and the new version enables defining existing Text objects under a different Variation subclass, the implementation MUST construct a new object under the other Variation subclass. In such a case, an implementation SHOULD persist the original Text object and respond to queries matching the Text object with the new object.
- Additional Variation subclasses are continually under consideration. Please open a [GitHub issue](#) if you would like to propose a Variation subclass to cover a needed variation representation.

### Example

```

{
  "definition": "APOE loss",
  "type": "Text"
}

```



### 3.1 Overview

### 3.2 Machine Readable Specifications

The machine readable VR Specification is written using [JSON Schema](#).

The schema itself is written in [YAML \(vr.yaml\)](#) and converted to [JSON \(vr.json\)](#). Version 1.0 is current.

Contributions to the schema **MUST** be written in the [YAML](#) document.

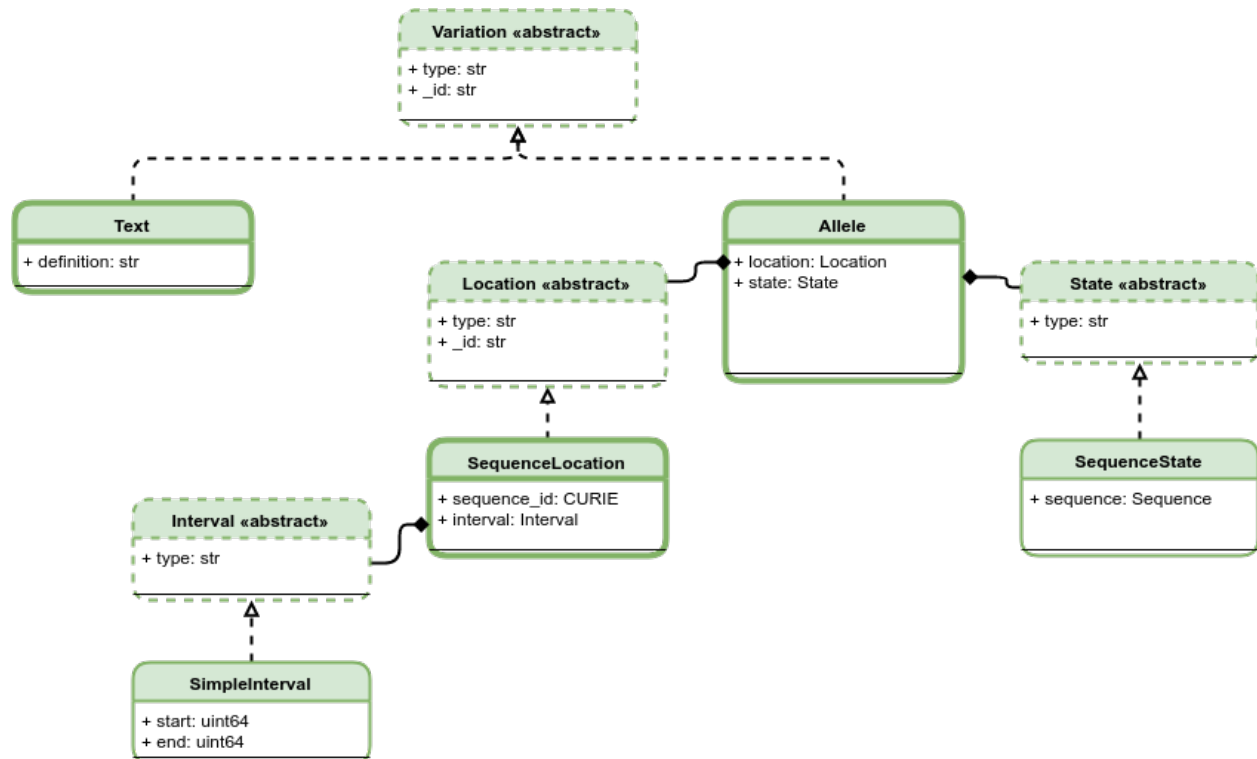


Fig. 1: VR Schema Diagram

The VR Schema describes multiple composite objects, which are grouped under four abstract classes: *Variation*, *Location* (*Abstract Class*), *State* (*Abstract Class*), and *Interval* (*Abstract Class*). These classes and their relationships to the representation of Variation are illustrated here. All classes have a string *type*. Dashed borders denote abstract classes. Abstract classes are not instantiated. Thin solid borders denote classes that may be instantiated but are not identifiable. Bold borders denote identifiable objects (i.e., may be serialized and identified by computed identifier). Solid arrow lines denoted inheritance. Subclasses inherit all attributes from their parent. Inherited attributes are not shown. These abstract classes and their concrete child classes are described in the following documents.

---

## Implementation Guide

---

This section describes the data and algorithmic components that are REQUIRED for implementations of the VR Specification.

- *Required External Data*: All implementations will require access to sequences and sequence accessions. The Required External Data section provides guidance on the abstract functionality that is required in order to implement VR.
- *Normalization*: Expands Alleles to the maximal region of representational ambiguity.
- *Computed Identifiers*: Generate globally unique identifiers based solely on the variation definition.

### 4.1 Required External Data

All VR-Spec implementations will require external data regarding sequences and sequence metadata. The choices of data sources and access methods are left to implementations. This section provides guidance about how to implement required data and helps implementers estimate effort. This section is descriptive only: it is not intended to impose requirements on interface to, or sources of, external data. For clarity and completeness, this section also describes the contexts in which external data are used.

#### 4.1.1 Contexts

- **Conversion from other variant formats** When converting from other variation formats, implementations MUST translate primary database accessions or identifiers (e.g., NM\_000551.3 or refseq:NM\_000551.3) to a GA4GH VR sequence identifier (ga4gh:SQ.v\_QTc1p-MUYdgrRv4LMT6ByXIOsdw3C\_)
- **Conversion to other variant formats** When converting to other variation formats, implementations SHOULD translate GA4GH VR sequence identifier (ga4gh:SQ.v\_QTc1p-MUYdgrRv4LMT6ByXIOsdw3C\_) to primary database identifiers (refseq:NM\_000551.3) that will be more readily recognized by users.
- **Normalization** During *Normalization*, implementations will need access to sequence length and sequence contexts.

## 4.1.2 Data Services

The following tables summarizes data required in the above contexts:

Table 1: Data Service Descriptions

Data Service	Description	Contexts
sequence	For a given sequence identifier and range, return the corresponding subsequence.	normalization
sequence length	For a given sequence identifier, return the length of the sequence	normalization
identifier translation	For a given sequence identifier and target namespace, return all identifiers in the target namespace that are equivalent to the given identifier.	Conversion to/from other formats

**Note:** Construction of the GA4GH computed identifier for a sequence is described in *Computed Identifiers*.

## 4.1.3 Suggested Implementation

In order to maximize portability and to insulate implementations from decisions about external data sources, implementers should consider writing an abstract data proxy interface that to define a service, and then implement this interface for each data backend to be supported. The *vr-python: GA4GH VR Python Implementation DataProxy* class provides an example of this design pattern and sample replies.

The DataProxy interface defines three methods:

- `get_sequence(identifier, start, end)`: Given a sequence identifier and start and end coordinates, return the corresponding sequence segment.
- `get_metadata(identifier)`: Given a sequence identifier, return a dictionary of length, alphabet, and known aliases.
- `translate_sequence_identifier(identifier, namespace)`: Given a sequence identifier, return all aliases in the specified namespace. Zero or more aliases may be returned.

GA4GH VR Python Implementation implements the DataProxy interface using a local SeqRepo instance backend and using a SeqRepo REST Service backend. A GA4GH refget implementation has been started, but is pending interface changes to support lookup using primary database accessions.

## Examples

The following examples are taken from VR Python Notebooks:

```
from ga4gh.vr.extras.dataproxy import SeqRepoRESTDataProxy
seqrepo_rest_service_url = "http://localhost:5000/seqrepo"
dp = SeqRepoRESTDataProxy(base_url=seqrepo_rest_service_url)

def get_sequence(identifier, start=None, end=None):
    """returns sequence for given identifier, optionally limited
    to interbase <start, end> interval"""
    return dp.get_sequence(identifier, start, end)
def get_sequence_length(identifier):
```

(continues on next page)

(continued from previous page)

```

    """return length of given sequence identifier"""
    return dp.get_metadata(identifier) ["length"]
def translate_sequence_identifier(identifier, namespace):
    """return for given identifier, return *list* of equivalent identifiers in given_
    ↪ namespace"""
    return dp.translate_sequence_identifier(identifier, namespace)

```

```

get_sequence_length("ga4gh:SQ.IIB53T8CNeJJdUqzn9V_JnRtQadwWCbl")
58617616

```

```

start, end = 44908821-25, 44908822+25
get_sequence("ga4gh:SQ.IIB53T8CNeJJdUqzn9V_JnRtQadwWCbl", start, end)
'CCGCGATGCCGATGACCTGCAGAAGCGCCTGGCAGTGTACCAGGCCGGGGC'

```

```

translate_sequence_identifier("GRCh38:19", "ga4gh")
['ga4gh:SQ.IIB53T8CNeJJdUqzn9V_JnRtQadwWCbl']

```

```

translate_sequence_identifier("ga4gh:SQ.IIB53T8CNeJJdUqzn9V_JnRtQadwWCbl", "GRCh38")
['GRCh38:19', 'GRCh38:chr19']

```

## 4.2 Normalization

Certain insertion or deletion alleles may be represented ambiguously when using conventional sequence normalization, resulting in significant challenges when comparing such alleles.

The VR-Spec describes a “fully-justified” normalization algorithm inspired by NCBI’s Variant Overprecision Correction Algorithm<sup>1</sup>. Fully-justified normalization expands such ambiguous representation over the entire region of ambiguity, resulting in an *unambiguous* representation that may be readily compared with other alleles.

The VR-Spec RECOMMENDS that Alleles at precise locations are normalized to a fully justified form unless there is a compelling reason to do otherwise.

The process for fully justifying two alleles (reference sequence and alternate sequence) at an interval is outlined below.

### 1. Trim sequences:

- Remove suffixes common to all alleles, if any. Decrement the interval end position by the length of the trimmed suffix.
- Remove prefixes common to all alleles, if any. Increment the interval start position by the length of the trimmed prefix.
- If neither allele is empty, the allele pairs represent a alleles that do not have common prefixes or suffixes. Normalization is not applicable and the trimmed alleles are returned.

### 2. Determine bounds of ambiguity:

- Left roll: While the terminal base of all non-empty alleles is equal to the base *prior* to the current position, circularly permute all alleles *rightward* and move the current position *leftward*. When terminating, return *left\_roll*, the number of steps rolled leftward.
- Right roll: Symmetric case of left roll, returning *right\_roll*, the number of steps rolled rightward.

### 3. Update position and alleles:

<sup>1</sup> Holmes, J. B., Moyer, E., Phan, L., Maglott, D. & Kattman, B. L. *SPDI: Data Model for Variants and Applications at NCBI*. bioRxiv 537449 (2019). doi:10.1101/537449

- To each trimmed allele, prepend the *left\_roll* bases prior to the trimmed allele position and append the *right\_roll* bases after the trimmed allele position.
- Expand the trimmed allele position by decrementing the start by *left\_roll* and incrementing the end by *right\_roll*.



Table 2: **VR Justified Normalization** A demonstration of fully justifying an insertion allele.

Steps	Interbase Position and Alleles	Resulting Allele Set (All alleles in this column result in the same empirical sequence change.)
0. Given allele $S:g.5_6delinsCAGCA$ defined on reference sequence $S=TCAGCAGCT$	(4,6) ("CA", "CAGCA")	$TCAG\left[\frac{CA}{CAGCA}\right]GCT$
1. Trimming Remove prefix common to all alleles, if any, and update start position. Remove suffix common to all alleles, if any, and update end position. <b>Note:</b> This example shows removing C prefix and A suffix. Equivalently in this case, CA prefix or CA suffix could be removed.	(5,5) ("", "AGC")	$TCAGC\left[\frac{}{AGC}\right]AGCT$
2. Condition: One allele must be empty. If the reference allele is empty, the allele set represents an insertion in the reference. If the alternate allele is empty, the allele set represents a deletion in the reference. If neither is true, the allele set represents a substitution, which is not subject to further normalization.		
3. Roll Left Begin with trimmed alleles . While the terminal base of all non-empty alleles equals the base prior to the current position, circularly permute all alleles right one step and move the start left one position. Shown: The 4 incremental steps of rolling left.	(1,1) ("", "CAG")	$TCAGC\left[\frac{}{AGC}\right]AGCT$ $TCAG\left[\frac{}{CAG}\right]CAGCT$ $TCA\left[\frac{}{GCA}\right]GCAGCT$ $TC\left[\frac{}{AGC}\right]AGCAGCT$ $T\left[\frac{}{CAG}\right]CAGCAGCT$ $\Rightarrow left\_roll = 4$
4. Roll Right Symmetric case of step 3.	(8,8) ("", "AGC")	$TCAGC\left[\frac{}{AGC}\right]AGCT$ $TCAGCA\left[\frac{}{GCA}\right]GCT$ $TCAGCAG\left[\frac{}{CAG}\right]CT$ $TCAGCAGC\left[\frac{}{AGC}\right]T$ $\Rightarrow right\_roll = 3$
<b>4.2. Normalization</b>		<b>21</b>
5. Update position and alleles to fully justify within region of ambiguity.	(1,8)	$TCAGC\left[\frac{}{} \right]AGCT$

## References

## 4.3 Computed Identifiers

**Note:** This section depends on the *Proposal for GA4GH-wide Computed Identifier Standard*, which is under discussion. Based on conversations with GA4GH technical leaders, the proposal is expected to be approved and, therefore, this VR proposal assumes the use of the `ga4gh` prefix.

In the event that the proposal is not accepted, this section will be modified as described in *Namespace Contingency Plan*. Because identifiers created through this proposal are expected to be durable, it is critical for GA4GH to make a long-term decision regarding identifiers.

The VR-Spec provides an algorithmic solution to deterministically generate a globally unique identifier from a VR object itself. All valid implementations of the VR Computed Identifier will generate the same identifier when the objects are identical, and will generate different identifiers when they are not. The VR Computed Digest algorithm obviates centralized registration services, allows computational pipelines to generate “private” ids efficiently, and makes it easier for distributed groups to share data.

A VR Computed Identifier for a VR concept is computed as follows:

- If the object is an *Allele*, *normalize* it.
- Generate binary data to digest. If the object is a *Sequence* string, encode it using UTF-8. Otherwise, serialize the object using *Digest Serialization*.
- *Generate a truncated digest* from the binary data.
- *Construct an identifier* based on the digest and object type.

The following diagram depicts the operations necessary to generate a computed identifier. These operations are described in detail in the subsequent sections.

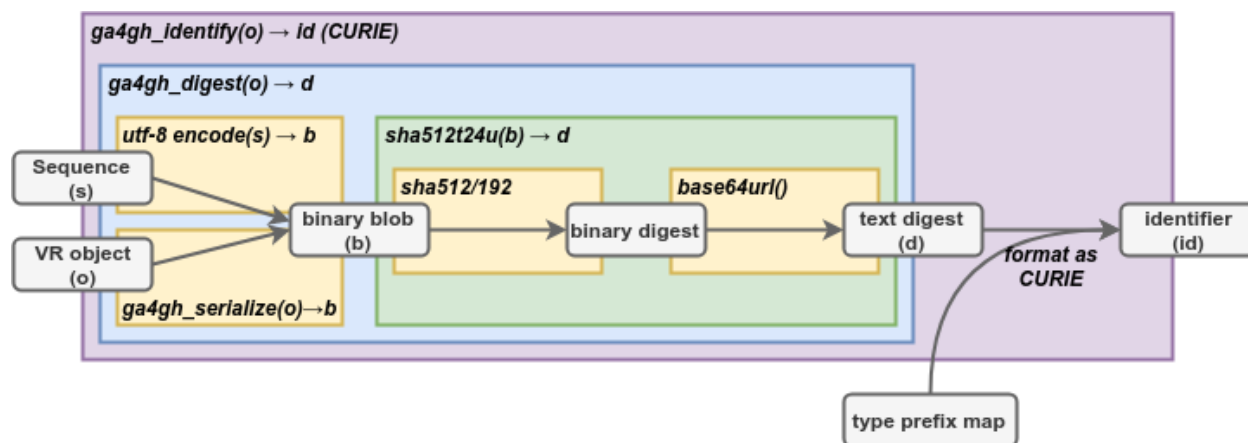


Fig. 1: **Serialization, Digest, and Computed Identifier Operations** Entities are shown in gray boxes. Functions are denoted by bold italics. The yellow, green, and blue boxes, corresponding to the `sha512t24u`, `ga4gh_digest`, and `ga4gh_identify` functions respectively, depict the dependencies among functions. `SHA512/192` is `SHA-512` truncated at 192 bits using the systematic name recommended by `SHA-512` (§5.3.6). `base64url()` is the official name of the variant of `Base64` encoding that uses a URL-safe character set. [figure source]

**Note:** Most implementation users will need only the *ga4gh\_identify* function. We describe the *ga4gh\_serialize*, *ga4gh\_digest*, and *sha512t24u* functions here primarily for implementers.

---

### 4.3.1 Requirements

Implementations **MUST** adhere to the following requirements:

- Implementations **MUST** use the normalization, serialization, and digest mechanisms described in this section when generating GA4GH Computed Identifiers. Implementations **MUST NOT** use any other normalization, serialization, or digest mechanism to generate a GA4GH Computed Identifier.
- Implementations **MUST** ensure that all nested objects are identified with GA4GH Computed Identifiers. Implementations **MAY NOT** reference nested objects using identifiers in any namespace other than `ga4gh`.

**Note:** The GA4GH schema **MAY** be used with identifiers from any namespace. For example, a `SequenceLocation` may be defined using a `sequence_id = refseq:NC_000019.10`. However, an implementation of the Computed Identifier algorithm **MUST** first translate sequence accessions to GA4GH `SQ` accessions to be compliant with this specification.

---

### 4.3.2 Digest Serialization

Digest serialization converts a VR object into a binary representation in preparation for computing a digest of the object. The Digest Serialization specification ensures that all implementations serialize variation objects identically, and therefore that the digests will also be identical. [VR Specification](#) provides validation tests to ensure compliance.

**Important:** Do not confuse Digest Serialization with JSON serialization or other serialization forms. Although Digest Serialization and JSON serialization appear similar, they are **NOT** interchangeable and will generate different GA4GH Digests.

---

Although several proposals exist for serializing arbitrary data in a consistent manner ([[Gibson](#)], [[OLPC](#)], [[JCS](#)]), none have been ratified. As a result, [VR Specification](#) defines a custom serialization format that is consistent with these proposals but does not rely on them for definition; it is hoped that a future ratified standard will be forward compatible with the process described here.

The first step in serialization is to generate message content. If the object is a string representing a *Sequence*, the serialization is the UTF-8 encoding of the string. Because this is a common operation, implementations are strongly encouraged to precompute GA4GH sequence identifiers as described in [Required External Data](#).

If the object is a composite VR object, implementations **MUST**:

- ensure that objects are referenced with identifiers in the `ga4gh` namespace
- replace nested identifiable objects (i.e., objects that have `id` properties) with their corresponding *digests*
- order arrays of digests and ids by Unicode Character Set values
- filter out fields that start with underscore (e.g., *\_id*)
- filter out fields with null values

The second step is to JSON serialize the message content with the following **REQUIRED** constraints:

- encode the serialization in UTF-8

- exclude insignificant whitespace, as defined in [RFC8259§2](#)
- order all keys by Unicode Character Set values
- use two-char escape codes when available, as defined in [RFC8259§7](#)

The criteria for the digest serialization method was that it must be relatively easy and reliable to implement in any common computer language.

### Example

```
allele = models.Allele(location=models.SequenceLocation(
    sequence_id="ga4gh:SQ.IIB53T8CNeJJdUqzn9V_JnRtQadwWCb1",
    interval=simple_interval),
    state=models.SequenceState(sequence="T"))
ga4gh_serialize(allele)
```

Gives the following *binary* (UTF-8 encoded) data:

```
{"location": "u5fspwVbQ79QkX6GHLF8tXPCAXFJqRPx", "state": {"sequence": "T", "type":
↪ "SequenceState"}, "type": "Allele"}
```

For comparison, here is one of many possible JSON serializations of the same object:

```
allele.for_json()
```

```
{
  "location": {
    "interval": {
      "end": 44908822,
      "start": 44908821,
      "type": "SimpleInterval"
    },
    "sequence_id": "ga4gh:SQ.IIB53T8CNeJJdUqzn9V_JnRtQadwWCb1",
    "type": "SequenceLocation"
  },
  "state": {
    "sequence": "T",
    "type": "SequenceState"
  },
  "type": "Allele"
}
```

### 4.3.3 Truncated Digest (sha512t24u)

The sha512t24u truncated digest algorithm computes an ASCII digest from binary data. The method uses two well-established standard algorithms, the [SHA-512](#) hash function, which generates a binary digest from binary data, and [Base64](#) URL encoding, which encodes binary data using printable characters.

Computing the sha512t24u truncated digest for binary data consists of three steps:

1. Compute the [SHA-512](#) digest of a binary data.
2. Truncate the digest to the left-most 24 bytes (192 bits). See *Truncated Digest Collision Analysis* for the rationale for 24 bytes.
3. Encode the truncated digest as a [base64url](#) ASCII string.

```
>>> import base64, hashlib
>>> def sha512t24u(blob):
    digest = hashlib.sha512(blob).digest()
    tdigest = digest[:24]
    tdigest_b64u = base64.urlsafe_b64encode(tdigest).decode("ASCII")
    return tdigest_b64u
>>> sha512t24u(b"ACGT")
'aKF498dAxcJAqme6QYQ7EZ07-fiw8Kw2'
```

### 4.3.4 Identifier Construction

The final step of generating a computed identifier for a VR object is to generate a [W3C CURIE](#) formatted identifier, which has the form:

```
prefix ":" reference
```

The GA4GH VR-Spec constructs computed identifiers as follows:

```
"ga4gh" ":" type_prefix "." <digest>
```

**Warning:** Do not confuse the W3C CURIE prefix (“ga4gh”) with the type prefix.

Type prefixes used by VR are:

type_prefix	VR Spec class name
SQ	Sequence
VA	Allele
VSL	Sequence Location
VT	Text

For example, the identifier for the allele example under *Digest Serialization* gives:

```
ga4gh:VA.EgHPXXhULTwoP4-ACfs-YCXaeUQJBjH_
```

### 4.3.5 Namespace Contingency Plan

In the event that *Proposal for GA4GH-wide Computed Identifier Standard* is not accepted, the following changes will be made to this section of the specification:

- The namespace (CURIE prefix) will become `vr`.
- In the function names `ga4gh_digest`, `ga4gh_identify`, and `ga4gh_serialize`, `ga4gh` will be replaced with `vr`.
- The GA4GH VR team will manage type prefixes.

All other aspects of the computed identifier scheme will remain intact.

### 4.3.6 References

## 4.4 Example

This section provides a complete, language-neutral example of essential features of VR. In this example, we will translate an HGVS-formatted variant, `NC_000013.11:g.32936732G>C`, into its VR format and assign a globally unique identifier.

### 4.4.1 Translate HGVS to VR

#### Polymorphism in VR

VR uses polymorphism extensively in order to provide a coherent top-down structure for variation while enabling precise models for variation data.

For example, *Allele* is a kind of *Variation*, *SequenceLocation* is a kind of *Location*, and *SequenceState* is a kind of *State*. See *Future Plans* for the roadmap of VR data classes and relationships.

All VR objects contain a `type` attribute, which is used to discriminate polymorphic objects.

The HGVS string `NC_000013.11:g.32936732G>C` represents a single base substitution on the reference sequence `NC_000013.11` (human chromosome 13, assembly GRCh38) at position 32936732 from the reference nucleotide G to C.

In VR, a contiguous change is represented using an *Allele* object, which is composed of a *Location* and of the *State* at that location. Location and State are abstract concepts: VR is designed to accommodate many kinds of Locations based on sequence position, gene names, cytogenetic bands, or other ways of describing locations. Similarly, State may refer to a specific sequence change, copy number change, or complex sequence event.

In this example, we will use a *SequenceLocation*, which is composed of a sequence identifier and a *SimpleInterval*.

In VR, all identifiers are a *Compact URI (CURIE)*. Therefore, `NC_000013.11` MUST be written as the string `refseq:NC_000013.11` to make explicit that this sequence is from *RefSeq*. VR does not restrict which data sources may be used, but does recommend using prefixes from *identifiers.org*.

VR uses *Interbase Coordinates*. Interbase coordinates *always* use intervals to refer to sequence spans. For the purposes of this example, interbase coordinates *look* like the more familiar 0-based, right-open numbering system. (Please read about *Interbase Coordinates* if you are interested in the significant advantages of this design choice over other coordinate systems.)

The *SimpleInterval* for the position 32936732 is

```
{
  "end": 32936732,
  "start": 32936731,
  "type": "SimpleInterval"
}
```

The interval is then ‘placed’ on a sequence to create the *SequenceLocation*:

```
{
  "interval": {
    "end": 32936732,
    "start": 32936731,
```

(continues on next page)

(continued from previous page)

```

    "type": "SimpleInterval"
  },
  "sequence_id": "refseq:NC_000013.11",
  "type": "SequenceLocation"
}

```

A *SequenceState* objects consists simply of the replacement sequence, as follows:

```

{
  "sequence": "C",
  "type": "SequenceState"
}

```

We are now in a position to construct an *Allele* object using the objects defined above:

```

{
  "location": {
    "interval": {
      "end": 32936732,
      "start": 32936731,
      "type": "SimpleInterval"
    },
    "sequence_id": "refseq:NC_000013.11",
    "type": "SequenceLocation"
  },
  "state": {
    "sequence": "C",
    "type": "SequenceState"
  },
  "type": "Allele"
}

```

This Allele is a fully-compliant VR object that is parsable using the VR JSON Schema.

---

**Note:** VR is verbose! The goal of VR is to provide a extensible framework for representation of sequence variation in computers. VR objects are readily parsable and have precise meaning, but are often larger than other representations and are typically less readable by humans. This tradeoff is intentional!

---

#### 4.4.2 Generate a computed identifier

A key feature of VR-Spec is an easily-implemented algorithm to generate computed, digest-based identifiers for variation objects. This algorithm permits organizations to generate the same identifier for the same allele without prior coordination, which in turn facilitates sharing, obviates centralized registration services, and enables identifiers to be used in secure settings (such as diagnostic labs).

Generating a computed identifier requires that all nested objects also use computed identifiers. In this example, the sequence identifier MUST be transformed into a digest-based identifier as described in *Computed Identifiers*. In practice, implementations SHOULD precompute sequence digests or SHOULD use an existing service that does so. (See *Required External Data* for a description of data that are needed to implement VR.) In this case, `refseq:NC_000013.11` maps to `ga4gh:SQ._0wi-qoDrvram155UmcSC-zA5ZK4fpLT`. All VR computed identifiers begin with the `ga4gh` prefix and use a type prefix (`SQ`, here) to denote the type of object. The VR sequence identifier is then substituted directly into the Allele's location object:

```
{
  "location": {
    "interval": {
      "end": 32936732,
      "start": 32936731,
      "type": "SimpleInterval"
    },
    "sequence_id": "ga4gh:SQ._0wi-qoDrvram155UmcSC-zA5ZK4fpLT",
    "type": "SequenceLocation"
  },
  "state": {
    "sequence": "C",
    "type": "SequenceState"
  },
  "type": "Allele"
}
```

This, too, is a valid VR Allele.

**Note:** Using VR sequence identifiers collapses differences between alleles due to trivial differences in reference naming. The same variation reported on NC\_000013.11, CM000675.2, GRCh38:13, GRCh38.p13:13 would appear to be distinct variation; using a digest identifier will ensure that variation is reported on a single sequence identifier. Furthermore, using digest-based sequence identifiers enables the use of custom reference sequences.

The first step in constructing a computed identifier is to create a binary digest serialization of the Allele. Details are provided in *Computed Identifiers*. For this example the binary object looks like:

```
'{"location": "v9K0mcjQVugxTDIcdi7GBJ_R6fZ1lsYq", "state": {"sequence": "C", "type": "SequenceState"}, "type": "Allele"}'
(UTF-8 encoded)
```

**Important:** The binary serialization is governed by constraints that guarantee that different implementations will generate the same binary “blob”. Do not confuse binary digest serialization with JSON serialization, which is used elsewhere with VR schema.

The GA4GH digest for the above blob is computed using the first 192 bits (24 bytes) of the [SHA-512](#) digest, [base64url](#) encoded. Conceptually, the function is:

```
base64url( sha512( blob )[:24] )
```

In this example, the value returned is `n9ax-9x6gOC00Et73VMYqCBfqfxG1XUH`.

A GA4GH Computed Identifier has the form:

```
"ga4gh" ":" <type_prefix> "." <digest>
```

The `type_prefix` for a VR Allele is `VA`, which results in the following computed identifier for our example:

```
ga4gh:VA.n9ax-9x6gOC00Et73VMYqCBfqfxG1XUH
```

Variation and Location objects contain an OPTIONAL `_id` attribute which implementations may use to store any CURIE-formatted identifier. *If* an implementation returns a computed identifier with objects, the object might look like the following:



```

{
  "_id": "ga4gh:VA.n9ax-9x6gOC00Et73VMYqCBfqfxG1XUH",
  "location": {
    "interval": {
      "end": 32936732,
      "start": 32936731,
      "type": "SimpleInterval"
    },
    "sequence_id": "ga4gh:SQ._0wi-qoDrvram155UmcSC-zA5ZK4fpLT",
    "type": "SequenceLocation"
  },
  "state": {
    "sequence": "C",
    "type": "SequenceState"
  },
  "type": "Allele"
}

```

This example provides a full VR-compliant Allele with a computed identifier.

---

**Note:** The `_id` attribute is optional. If it is used, the value **MUST** be a CURIE, but it does **NOT** need to be a GA4GH Computed Identifier. Applications **MAY** choose to implement their own identifier scheme for private or public use. For example, the above `_id` could be a serial number assigned by an application, such as `acmecorp:v0000123`.

---

### 4.4.3 What's Next?

This example has shown a full example for a relatively simple case. VR provides a framework that will enable much more complex variation. Please see *Future Plans* for a discussion of variation classes that are intended in the near future.

The implementations section lists libraries and packages that implement VR-Spec.

VR objects are *value objects*. An important consequence of this design choice is that data should be associated *with* VR objects via their identifiers rather than embedded *within* those objects. The appendix contains an example of *associating annotations with variation*.



## 5.1 Associating Annotations with VR Objects

This example demonstrates how to associate information with VR objects. Although the examples use the [GA4GH VR Python Implementation](#) library, the principles apply regardless of implementation.

Information is never embedded within VR objects. Instead, it is associated with those objects by means of their ids. This approach to annotations scales better in size and distributes better across multiple data sources.

```
import collections
from ga4gh.vr import ga4gh_identify, models
from ga4gh.vr.extras.dataproxy import SeqRepoRESTDataProxy
from ga4gh.vr.extras.translator import Translator

# Requires seqrepo REST interface is running on this URL (e.g., using docker image)
seqrepo_rest_service_url = "http://localhost:5000/seqrepo"
dp = SeqRepoRESTDataProxy(base_url=seqrepo_rest_service_url)

tlr = Translator(data_proxy=dp)
```

```
# Declare some data as human-readable RS id labels with HGVS expressions
data = (
    ("rs7412C", "NC_000019.10:g.44908822="),
    ("rs7412T", "NC_000019.10:g.44908822C>T"),
    ("rs429358C", "NC_000019.10:g.44908684="),
    ("rs429358T", "NC_000019.10:g.44908684T>C")
)
```

```
# Parse the HGVS expressions and generate three dicts:
# alleles[allele_id]  allele object
# rs_names[allele_id]  rs label
# hgvs_name[allele_id]  original hgvs expression
```

(continues on next page)

(continued from previous page)

```

# For convenience, also build
# rs_to_id[rs_name] allele_id

alleles = {}
rs_names = {}
hgvs_names = collections.defaultdict(lambda: dict())
for rs, hgvs_expr in data:
    allele = tlr.from_hgvs(hgvs_expr)
    allele_id = ga4gh_identify(allele)
    alleles[allele_id] = allele
    hgvs_names[allele_id] = hgvs_expr
    rs_names[allele_id] = rs

rs_to_id = {r: i for i, r in rs_names.items()}

```

```

# Now, build a new set of annotations: allele frequencies
# This is more complicated because it maps to a map of frequencies
# It should be clear that other frequencies could be easily added here
# or as a separate data source
freqs = {
    "gnomad": {
        "global": {
            rs_to_id["rs7412C"]: 0.9385,
            rs_to_id["rs7412T"]: 0.0615,
            rs_to_id["rs429358C"]: 0.1385,
            rs_to_id["rs429358T"]: 0.8615,
        }
    }
}

```

```

# It might be convenient to save these data
# A saved document might have structure like this:
doc = {
    "alleles": alleles,
    "hgvs_names": hgvs_names,
    "rs_names": rs_names,
    "freqs": freqs
}

```

```

# For the benefit of pretty printing, let's replace the allele objects with their
↪dict representations
doc["alleles"] = {i: a.as_dict() for i, a in doc["alleles"].items()}
import json
print(json.dumps(doc, indent=2))

```

```

{
  "alleles": {
    "ga4gh:VA.UUvQpMYU5x8XXBS-RhBhmipTWe2AALzj": {
      "location": {
        "interval": {
          "end": 44908822,
          "start": 44908821,
          "type": "SimpleInterval"
        },
      },
      "sequence_id": "ga4gh:SQ.IIB53T8CNeJJdUqzn9V_JnRtQadwWCbl",
    }
  }
}

```

```

    "type": "SequenceLocation"
  },
  "state": {
    "sequence": "C",
    "type": "SequenceState"
  },
  "type": "Allele"
},
"ga4gh:VA.EgHPXXhULTwoP4-ACfs-YCXaeUQJBjH_": {
  "location": {
    "interval": {
      "end": 44908822,
      "start": 44908821,
      "type": "SimpleInterval"
    },
    "sequence_id": "ga4gh:SQ.IIB53T8CNeJJdUqzn9V_JnRtQadwWCbl",
    "type": "SequenceLocation"
  },
  "state": {
    "sequence": "T",
    "type": "SequenceState"
  },
  "type": "Allele"
},
"ga4gh:VA.LQrGFIOAP8wEAYbwNB08pJ3yIG7tXWoh": {
  "location": {
    "interval": {
      "end": 44908684,
      "start": 44908683,
      "type": "SimpleInterval"
    },
    "sequence_id": "ga4gh:SQ.IIB53T8CNeJJdUqzn9V_JnRtQadwWCbl",
    "type": "SequenceLocation"
  },
  "state": {
    "sequence": "T",
    "type": "SequenceState"
  },
  "type": "Allele"
},
"ga4gh:VA.iXjilHZiyCEoD3wVMPMXG3B8BtYfL88H": {
  "location": {
    "interval": {
      "end": 44908684,
      "start": 44908683,
      "type": "SimpleInterval"
    },
    "sequence_id": "ga4gh:SQ.IIB53T8CNeJJdUqzn9V_JnRtQadwWCbl",
    "type": "SequenceLocation"
  },
  "state": {
    "sequence": "C",
    "type": "SequenceState"
  },
  "type": "Allele"
},

```

```

    "type": "Allele"
  }
},
"hgvs_names": {
  "ga4gh:VA.UUvQpMYU5x8XXBS-RhBhmipTWe2AALzj": "NC_000019.10:g.44908822=",
  "ga4gh:VA.EgHPXXhULTwoP4-ACfs-YCXaeUQJBjH_": "NC_000019.10:g.44908822C>T",
  "ga4gh:VA.LQrGFIOAP8wEAYbwNB08pJ3yIG7tXWoh": "NC_000019.10:g.44908684=",
  "ga4gh:VA.iXjilHZiyCEoD3wVMPMXG3B8BtYfL88H": "NC_000019.10:g.44908684T>C"
},
"rs_names": {
  "ga4gh:VA.UUvQpMYU5x8XXBS-RhBhmipTWe2AALzj": "rs7412C",
  "ga4gh:VA.EgHPXXhULTwoP4-ACfs-YCXaeUQJBjH_": "rs7412T",
  "ga4gh:VA.LQrGFIOAP8wEAYbwNB08pJ3yIG7tXWoh": "rs429358C",
  "ga4gh:VA.iXjilHZiyCEoD3wVMPMXG3B8BtYfL88H": "rs429358T"
},
"freqs": {
  "gnomad": {
    "global": {
      "ga4gh:VA.UUvQpMYU5x8XXBS-RhBhmipTWe2AALzj": 0.9385,
      "ga4gh:VA.EgHPXXhULTwoP4-ACfs-YCXaeUQJBjH_": 0.0615,
      "ga4gh:VA.LQrGFIOAP8wEAYbwNB08pJ3yIG7tXWoh": 0.1385,
      "ga4gh:VA.iXjilHZiyCEoD3wVMPMXG3B8BtYfL88H": 0.8615
    }
  }
}
}
}
}

```

## 5.2 Design Decisions

VR contributors confronted numerous trade-offs in developing this specification. As these trade-offs may not be apparent to outside readers, this section highlights the most significant ones and the rationale for our design decisions, including:

### 5.2.1 Variation Rather than Variant

The abstract *Variation* class is intentionally not labeled “Variant”, despite this being the primary term used in other molecular variation exchange formats (e.g. Variant Call Format, HGVS Sequence Variant Nomenclature). This is because the term “Variant” as used in the Genetics community is intended to describe discrete changes in nucleotide / amino acid sequence. “Variation”, in contrast, captures other classes of molecular variation, including epigenetic alteration and transcript abundance. Capturing these other classes of variation is a *future goal* of the VR-Spec, as there are many annotations that will require these variation classes as the subject.

### 5.2.2 Allele Rather than Variant

The most primitive sequence assertion in VR is the *Allele* entity. Colloquially, the words “allele” and “variant” have similar meanings and they are often used interchangeably. However, the VR contributors believe that it is essential to distinguish the state of the sequence from the change between states of a sequence. It is imperative that precise terms are used when modelling data. Therefore, within VR, Allele refers to a state and “variant” refers to the change from one Allele to another.

The word “variant”, which implies change, makes it awkward to refer to the (unchanged) reference allele. Some systems will use an HGVS-like syntax (e.g., NC\_000019.10:g.44906586G>G or NC\_000019.10:g.44906586=) when referring to an unchanged residue. In some cases, such “variants” are even associated with allele frequencies. Similarly, a predicted consequence is better associated with an allele than with a variant.

### 5.2.3 Alleles are Fully Justified

In order to standardize the presentation of sequence variation, computed ids from the VR specification require that Alleles be fully justified from the description of the NCBI [Variant Overprecision Correction Algorithm \(VOCA\)](#). Furthermore, normalization rules must be identical for all sequence types; although this need not be a strict requirement, there is no reason to normalize using different strategies based on sequence type.

The choice of algorithm was relatively straightforward: VOCA is published, easily understood, easily implemented, and covers a wide range of cases.

The choice to fully justify is a departure from other common variation formats. The HGVS nomenclature recommendations, originally published in 1998, require that alleles be right normalized ([3' rule](#)) on all sequence types. The Variant Call Format (VCF), released as a PDF specification in 2009, made the conflicting choice to write variants [left \(5'\) normalized](#) and anchored to the previous nucleotide.

Fully-justified alleles represent an alternate approach. A fully-justified representation does not make an arbitrary choice of where a variant truly occurs in a low-complexity region, but rather describes the final and unambiguous state of the resultant sequence.

### 5.2.4 Interbase Coordinates

Sequence ranges use an interbase coordinate system. Interbase coordinate conventions are used in this terminology because they provide conceptual consistency that is not possible with residue-based systems.

---

**Important:** The choice of what to count—residues versus inter-residue positions—has significant semantic implications for coordinates. Because interbase coordinates and the corresponding 0-based residue-counted coordinates are numerically identical in some circumstances, uninitiated readers often conflate the choice of numerical base with the choice of residue or inter-residue counting. Whereas the choice of numerical base is inconsequential, the semantic advantages of interbase are significant.

---

When humans refer to a range of residues within a sequence, the most common convention is to use an interval of ordinal residue positions in the sequence. While natural for humans, this convention has several shortcomings when dealing with sequence variation.

For example, interval coordinates are interpreted as exclusive coordinates for insertions, but as inclusive coordinates for substitutions and deletions; in effect, the interpretation of coordinates depends on the variant type, which is an unfortunate coupling of distinct concepts.

### 5.2.5 Modelling Language

The VR collaborators investigated numerous options for modelling data, generating code, and writing the wire protocol. Required and desired selection criteria included:

- language-neutral – or at least C/C++, java, python
- high-quality tooling/libraries
- high-quality code generation

- documentation generation
- **supported constructs and data types**
  - typedefs/aliases
  - enums
  - lists, maps, and maps of lists/maps
  - nested objects
- protocol versioning (but not necessarily automatic adaptation)

Initial versions of the VR logical model were implemented in UML, protobuf, and swagger/OpenAPI, and JSON Schema. We have implemented our schema in JSON Schema. Nonetheless, it is anticipated that some adopters of the VR logical model may implement the specification in other protocols.

## 5.2.6 Serialization Strategy

There are many packages and proposals that aspire to a canonical form for json in many languages. Despite this, there are no ratified or *de facto* winners. Many packages have similar names, which makes it difficult to discern whether they are related or not (often not). Although some packages look like good single-language candidates, none are ready for multi-language use. Many seem abandoned. The need for a canonical json form is evident, and there was at least one proposal for an ECMA standard.

Therefore, we implemented our own *serialization format*, which is very similar to [Gibson Canonical JSON](#) (not to be confused with [OLPC Canonical JSON](#)).

## 5.3 Development Process

### 5.3.1 Versioning

VR-Spec will follow GA4GH [recommendation for semantic versioning](#) with semver 2.0. The VR-Spec GitHub repository will maintain the latest development code on the master branch for community review (see [Release Cycle](#)).

### 5.3.2 Release Cycle

#### Planned Features

Feature requests from the community are made through the generation of [GitHub issues on the VR-Spec repository](#), which are open for public review and discussion. Feature requests identified to support an unmet need by the existing VR-Spec are scheduled for discussion in our weekly VR calls. These discussions are used to inform whether or not a feature will be planned for development. The *Project Leadership* is responsible for making the final determination on whether a feature is to be added to VR-Spec.

#### Requirements Gathering

Once a feature is planned for production, an issue requesting community feedback on use cases and technical requirements will be constructed (see [example requirement issues](#)).



## Feature Development

Features will be developed to meet gathered requirements. Features ready for public review MAY be merged into the master branch by pull request through review and approval by at least one (non-authoring) *Project Maintainer*. Merged commits MAY be tagged as alpha releases when needed.

## Version Review and Release

After completion of all planned features for a new minor or major version, a request for community review will be indicated by a beta release of the new version. Community stakeholders involved in the feature requests and requirements gathering for the included features are notified by Project Maintainers for review and approval of the release. After a community review period of at least two weeks, the Project Leadership will review and address any raised concerns for the reviewed version.

After passing review, new minor versions are released to production. If any features in the reviewed version are deemed to be significant additions to the specification by the Project Leadership, or if it is a major version change, instead a release candidate version will be released and submitted for GA4GH product approval. After approval, the new version is released to production.

### 5.3.3 Leadership

#### Project Leadership

As a product of the Genomic Knowledge Standards (GKS) Work Stream, project leadership is comprised of the *Work Stream leadership*:

- Alex Wagner (@ahwagner)
- Andy Yates (@andrewyatz)
- Bob Freimuth (@rrfreimuth)
- Javier Lopez (@javild)
- Larry Babb (@larrybabb)
- Matt Brush (@mbrush)
- Melissa Konopko (@MKonopko)
- Reece Hart (@reece)

#### Project Maintainers

Project maintainers are the leads of the GKS Variation Representation working group:

- Alex Wagner (@ahwagner)
- Larry Babb (@larrybabb)
- Reece Hart (@reece)

## 5.4 Future Plans

### 5.4.1 Overview

The VR-Spec covers a fundamental subset of data types to represent variation, thus far predominantly related to the replacement of a subsequence in a reference sequence. Increasing its applicability will require supporting more complex types of variation, including:

- alternative coordinate types such as nested ranges
- feature-based coordinates such as genes, cytogenetic bands, and exons
- haplotypes and genotypes
- copy number variation
- structural variation
- mosaicism and chimerism
- rule-based variation

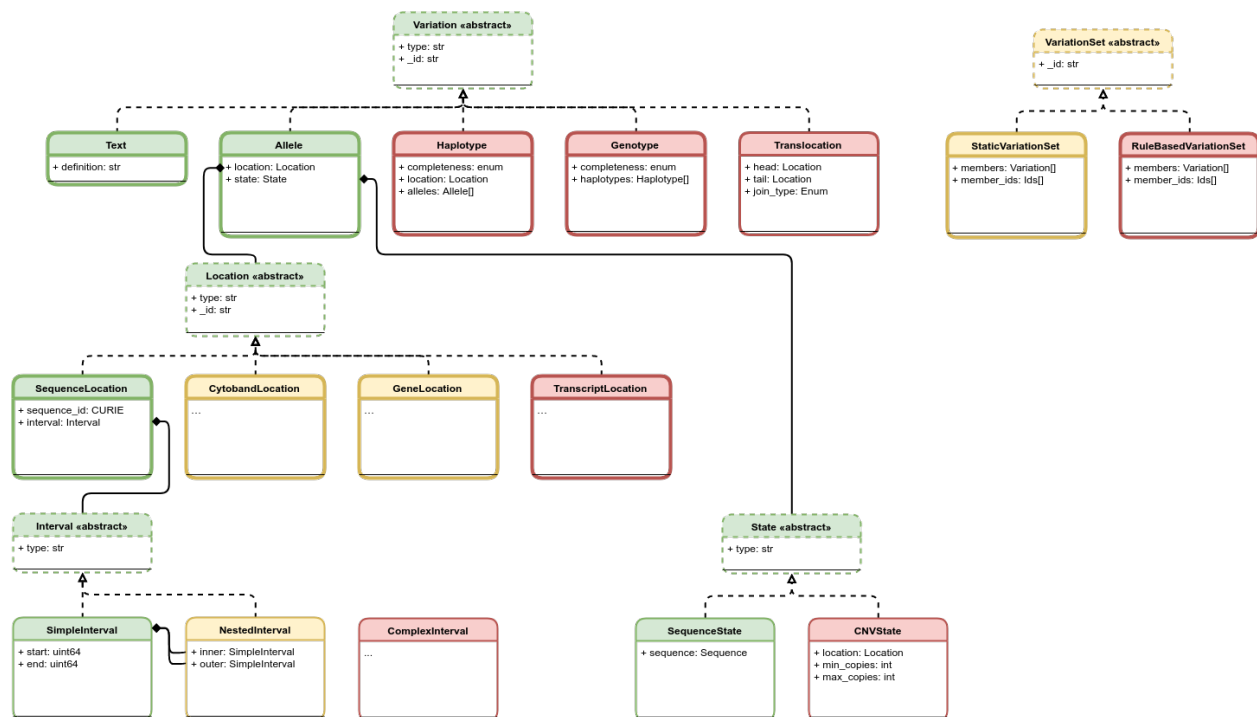


Fig. 1: **An illustration of planned components for the VR Schema.** Version 1.0 components are colored green. Components that are undergoing testing and evaluation and are candidates for the next release cycle are colored yellow. Components that are planned but still undergoing requirement gathering and initial development are colored red. The VR Schema requires the use of multiple composite objects, which are grouped under four abstract classes: *Variation*, *Location (Abstract Class)*, *State (Abstract Class)*, and *Interval (Abstract Class)*. These classes and their relationships to the representation of Variation are illustrated here. All classes have a string type. Dashed borders denote abstract classes. Abstract classes are not instantiated. Thin solid borders denote classes that may be instantiated but are not identifiable. Bold borders denote identifiable objects (i.e., may be serialized and identified by computed identifier). Solid arrow lines denoted inheritance. Subclasses inherit all attributes from their parent. Inherited attributes are not shown.

The following sections provide a preview of planned concepts under way to address a broader representation of variation.

## 5.4.2 Intervals and Locations

VR-Spec uses *Interval (Abstract Class)* and *Location (Abstract Class)* subclasses to define where variation occurs. The schema is designed to be extensible to new kinds of Intervals and Locations in order to support, for example, fuzzy coordinates or feature-based locations.

### NestedInterval

#### Biological definition

None

#### Computational definition

An *Interval (Abstract Class)* comprised of an *inner* and *outer SimpleInterval*. The *NestedInterval* allows for the definition of “fuzzy” range endpoints by designating a potentially included region (the *outer SimpleInterval*) and required included region (the *inner SimpleInterval*).

#### Information model

Field	Type	Limits	Description
type	string	1..1	Interval type; MUST be set to ‘ <b>NestedInterval</b> ’
inner	<i>SimpleInterval</i>	1..1	known interval
outer	<i>SimpleInterval</i>	1..1	potential interval

#### Implementation guidance

- Implementations MUST enforce values  $0 \leq \text{outer.start} \leq \text{inner.start} \leq \text{inner.end} \leq \text{outer.end}$ . In the case of double-stranded DNA, this constraint holds even when a feature is on the complementary strand.

### ComplexInterval

#### Biological definition

Representation of complex coordinates based on relative locations or offsets from a known location. Examples include “left of” a given position and intronic positions measured from intron-exon junctions.

#### Computational definition

Under development.

#### Information model

Under development.

### CytobandLocation

#### Biological definition

Imprecise chromosomal locations based on chromosomal staining.

#### Computational definition

Cytogenetic bands are defined by a chromosome name, band, and sub-band. In VR-Spec, a cytogenetic location is an interval on a single chromosome with a start and end band and subband.

#### Information model

Under development.

### GeneLocation

#### Biological definition

The symbolic location of a gene.

#### Computational definition

A gene location is made by reference to a gene identifier from NCBI, Ensembl, HGNC, or other public trusted authority.

#### Information model

Field	Type	Limits	Description
<code>_id</code>	<i>CURIE</i>	0..1	Location Id; MUST be unique within document
<code>type</code>	string	1..1	Location type; MUST be set to ' <b>GeneLocation</b> '
<code>gene_id</code>	<i>CURIE</i>	1..1	CURIE-formatted gene identifier using NCBI numeric gene id.

#### Notes

- `gene_id` MUST be specified as a CURIE, using a CURIE prefix of “*NCBI*” and CURIE reference with the numeric gene id. Other trusted authorities MAY be permitted in future releases.

#### Implementation guidance

- GeneLocations MAY be converted to *SequenceLocation* using external data. The source of such data and mechanism for implementation is not defined by this specification.

## 5.4.3 State Classes

Additional *State (Abstract Class)* concepts that are being planned for future consideration in the specification.

### CNVState

---

**Note:** This concept is being refined. Please comment at <https://github.com/ga4gh/vr-spec/issues/46>.

---

#### Biological definition

Variations in the number of copies of a segment of DNA. Copy number variations cover copy losses or gains and at known or unknown locations (including tandem repeats). Variations MAY occur at precise *SequenceLocations*, within nested intervals, or at *GeneLocations*. There is no lower or upper bound on CNV sizes.

#### Computational definition

Under development.

#### Information model

Field	Type	Limits	Description
type	string	1..1	State type; MUST be set to 'CNVState'
location	<i>Location (Abstract Class)</i>	1..1	the Location of the copy ('null' if unknown)
min_copies	int	1..1	The minimum number of copies
max_copies	int	1..1	The maximum number of copies

#### 5.4.4 Variation Classes

Additional *Variation* concepts that are being planned for future consideration in the specification. See *Variation* for more information.

#### Haplotypes

##### Biological definition

A specific combination of Alleles that occur together on single sequence in one or more individuals.

##### Computational definition

A specific combination of non-overlapping *Alleles* that co-occur on the same reference sequence.

##### Information model

Field	Type	Limits	Description
_id	<i>CURIE</i>	0..1	Variation Id; MUST be unique within document
type	string	1..1	Variation type; MUST be set to ' <b>Haplotype</b> '
location	<i>Location (Abstract Class)</i>	1..1	Where Haplotype is located
completeness	enum	1..1	Declaration of completeness of the Haplotype definition. Values are: <ul style="list-style-type: none"> <li>• UNKNOWN: Other in-phase Alleles may exist.</li> <li>• PARTIAL: Other in-phase Alleles exist but are unspecified.</li> <li>• COMPLETE: The Haplotype declares a complete set of Alleles.</li> </ul>
alleles	<i>CURIE[]</i>	2..*	List of Alleles that comprise this Haplotype.

##### Implementation guidance

- The Haplotype location (as specified by the location\_id) MAY refer to a subsequence of the reference sequence, such as a subsequence of an entire chromosome.
- All Alleles in a Haplotype MUST be defined on the same reference sequence as specified by location\_id.

- Alleles within a Haplotype MUST not intersect (“intersect” is defined in *SimpleInterval*).
- All Location Intervals are to be interpreted in the context of the underlying reference sequence, irrespective of insertions or deletions by other “upstream” Alleles within the Haplotype.
- When reporting an Haplotype, completeness MUST be set according to these criteria:
  - “COMPLETE” only if the entire reference sequence was assayed and all in-phase Alleles are reported in this Haplotype.
  - “PARTIAL” only if the entire reference sequence was assayed, other in-phase Alleles exist, and are NOT reported in this Haplotype. This is an assertion of unreported variation.
  - “UNKNOWN” otherwise. This value is the default and SHOULD be used if neither “COMPLETE” nor “PARTIAL” applies. These cases include, but are not limited to, assays that do not fully cover the reference sequence and an unwillingness by the reporter to declare the existence or absence of other in-phase Alleles.
- A Haplotype with an empty list of Alleles and completeness set to “COMPLETE” is an assertion of an unchanged reference sequence.
- When projecting a Haplotype from one sequence to a larger sequence, a “complete” Haplotype becomes an “unknown” Haplotype on the target sequence. Furthermore, this change is not reversible.

### Notes

- Alleles within a Haplotype are, by definition, “cis” or “in-phase”. (“In phase” and “cis” refer to features that exist on instances of covalently bonded sequences.)
- Haplotypes are often given names, such as ApoE3 or A\*33:01 for convenience.
  - Examples: A\*33:01:01 (IMGT/HLA)
- When used to report Haplotypes, the completeness property enables data providers (e.g, diagnostic labs) to indicate that other Alleles exist, may exist, or do not exist. Data providers may not assay the full reference sequence or may withhold other in-phase Alleles in order to protect patient privacy.
- When used to define Haplotypes, the completeness property enables implementations to permit (PARTIAL) or preclude (COMPLETE) the existence of other variation when matching a Haplotype to a set of observed Alleles.
- Data consumers MAY wish to use the completeness property in order to provide accurate context for Allele interpretation or to select data used in association studies.

### Sources

- ISOGG: [Haplotype](#) — A haplotype is a combination of alleles (DNA sequences) at different places ( loci) on the [chromosome](#) that are transmitted together. A haplotype MAY be one locus, several loci, or an entire chromosome depending on the number of recombination events that have occurred between a given set of loci.
- SO: [haplotype \(SO:0001024\)](#) — A haplotype is one of a set of coexisting sequence variants of a haplotype block.
- GENO: [Haplotype \(GENO:0000871\)](#) - A set of two or more sequence alterations on the same chromosomal strand that tend to be transmitted together.

## Genotypes

### Biological definition

The genetic state of an organism, whether complete (defined over the whole genome) or incomplete (defined over a subset of the genome).

### Computational definition

A list of Haplotypes.

**Information model**

Field	Type	Limits	Description
<code>_id</code>	<i>CURIE</i>	0..1	Variation Id; <b>MUST</b> be unique within document
<code>type</code>	string	1..1	Variation type; <b>MUST</b> be set to ' <b>Genotype</b> '
<code>completeness</code>	enum	1..1	Declaration of completeness of the Haplotype definition. Values are: <ul style="list-style-type: none"> <li>• UNKNOWN: Other Haplotypes may exist.</li> <li>• PARTIAL: Other Haplotypes exist but are unspecified.</li> <li>• COMPLETE: The Genotype declares a complete set of Haplotypes.</li> </ul>
<code>haplotypes</code>	<i>CURIE[]</i>	2..*	List of Haplotypes; length <b>MUST</b> agree with ploidy of genomic region

**Implementation guidance**

- Haplotypes in a Genotype **MAY** occur at different locations or on different reference sequences. For example, an individual may have haplotypes on two population-specific references.
- Haplotypes in a Genotype **MAY** contain differing numbers of Alleles or Alleles at different Locations.

**Notes**

- The term “genotype” has two, related definitions in common use. The narrower definition is a set of alleles observed at a single location and with a ploidy of two, such as a pair of single residue variants on an autosome. The broader, generalized definition is a set of alleles at multiple locations and/or with ploidy other than two. The VR-Spec Genotype entity is based on this broader definition.
- The term “diplotype” is often used to refer to two haplotypes. The VR-Spec Genotype entity subsumes the conventional definition of diplotype. Therefore, the VR-Spec model does not include an explicit entity for diplotypes. See [this note](#) for a discussion.
- The VR-Spec model makes no assumptions about ploidy of an organism or individual. The number of Haplotypes in a Genotype is the observed ploidy of the individual.
- In diploid organisms, there are typically two instances of each autosomal chromosome, and therefore two instances of sequence at a particular location. Thus, Genotypes will often list two Haplotypes. In the case of haploid chromosomes or haploinsufficiency, the Genotype consists of a single Haplotype.
- A consequence of the computational definition is that Haplotypes at overlapping or adjacent intervals **MUST NOT** be included in the same Genotype. However, two or more Alleles **MAY** always be rewritten as an equivalent Allele with a common sequence and interval context.
- The rationale for permitting Genotypes with Haplotypes defined on different reference sequences is to enable the accurate representation of segments of DNA with the most appropriate population-specific reference sequence.

**Sources**

SO: *Genotype* (SO:0001027) — A genotype is a variant genome, complete or incomplete.

---

**Note:** Genotypes represent Haplotypes with arbitrary ploidy. The VR-Spec defines Haplotypes as a list of Alleles, and Genotypes as a list of Haplotypes. In essence, Haplotypes and Genotypes represent two distinct dimensions of containment: Haplotypes represent the “in phase” relationship of Alleles while Genotypes represents sets of Haplotypes of arbitrary ploidy.

There are two important consequences of these definitions: There is no single-location Genotype. Users of SNP data will be familiar with representations like rs7412 C/C, which indicates the diploid state at a position. In the VR-Spec, this is merely a special case of a Genotype with two Haplotypes, each of which is defined with only one Allele (the same Allele in this case). The VR-Spec does not define a diplotype type. A diplotype is a special case of a VR-Spec Genotype with exactly two Haplotypes. In practice, software data types that assume a ploidy of 2 make it very difficult to represent haploid states, copy number loss, and copy number gain, all of which occur when representing human data. In addition, assuming ploidy=2 makes software incompatible with organisms with other ploidy. The VR-Spec makes no assumptions about “normal” ploidy.

In other words, the VR-Spec does not represent single-position Genotypes or diplotypes because both concepts are subsumed by the Allele, Haplotype, and Genotypes entities.

---

## Translocations

---

**Note:** This concept is being refined. Please comment at <https://github.com/ga4gh/vr-spec/issues/103>

---

### Biological definition

The aberrant joining of two segments of DNA that are not typically contiguous. In the context of joining two distinct coding sequences, translocations result in a gene fusion, which is also covered by this VR-Spec definition.

### Computational definition

A joining of two sequences is defined by two *Location (Abstract Class)* objects and an indication of the join “pattern” (advice needed on conventional terminology, if any).

### Information model

Under consideration. See <https://github.com/ga4gh/vr-spec/issues/28>.

### Examples

t(9;22)(q34;q11) in BCR-ABL

## 5.4.5 Rule-based Variation

Some variations are defined by categorical concepts, rather than specific locations and states. These variations go by many terms, including *categorical variants*, *bucket variants*, *container variants*, or *variant classes*. These forms of variation are not described by any broadly-recognized variation format, but modeling them is a key requirement for the representation of aggregate variation descriptions as commonly found in biomedical literature. Our future work will focus on the formal specification for representing these variations with sets of rules, which we currently call *Rule-based Variation*.



## RuleLocation

RuleLocation is a subclass of *Location (Abstract Class)* intended to capture locations defined by rules instead of specific contiguous sequences. This includes locations defined by sequence characteristics, e.g. *microsatellite regions*.

## RuleState

RuleState is a subclass of *State (Abstract Class)* intended to capture states defined by categorical rules instead of sequence states. This includes *gain- / loss-of-function, oncogenic, and truncating* variation.

### 5.4.6 Variation Sets

---

**Note:** The VR-Spec anticipates the need for sets of variation. Sets MAY be static (immutable) or dynamic (changeable), and might be defined manually, by an *equivalence function*, or by an expansion functions. Furthermore, equivalence and expansion functions might be user-defined. This concept is being refined. Please comment at <https://github.com/ga4gh/vr-spec/issues/15>

---

## 5.5 Proposal for GA4GH-wide Computed Identifier Standard

This appendix describes a proposal for creating a GA4GH-wide standard for serializing data, computing digests on serialized data, and constructing CURIE identifiers from the digests. Essentially, it is a generalization of the *Computed Identifiers* section.

This standard is proposed now because the VR Specification needs a well-defined mechanism for generating identifiers. Changing the identifier mechanism later will create significant issues for VR adopters.

### 5.5.1 Background

The GA4GH mission entails structuring, connecting, and sharing data reliably. A key component of this effort is to be able to *identify* entities, that is, to associate identifiers with entities. Ideally, there will be exactly one identifier for each entity, and one entity for each identifier. Traditionally, identifiers are assigned to entities, which means that disconnected groups must coordinate on identifier assignment.

The computed identifier scheme proposed in the VR Specification computes identifiers from the data itself. Because identifiers depend on the data, groups that independently generate the same variation will generate the same computed identifier for that entity, thereby obviating centralized identifier systems and enabling identifiers to be used in isolated settings such as clinical labs.

The computed identifier mechanism is broadly applicable and useful to the entire GA4GH ecosystem. Adopting a common identifier scheme will make interoperability of GA4GH entities more obvious to consumers, will enable the entire organization to share common entity definitions (such as sequence identifiers), and will enable all GA4GH products to share tooling that manipulate identified data. In short, it provides an important consistency within the GA4GH ecosystem.

As a result, we are proposing that the computed identifier scheme described in the VR specification be considered for adoption as a GA4GH-wide standard. If the proposal is accepted by the GA4GH executive committee, the current VR proposal will stand as-is; if the proposal is rejected, the VR proposal will be modified to rescope the computed identifier mechanism to VR and under administration of the VR team.

## 5.5.2 Proposal

The following algorithmic processes, described in depth in the VR *Computed Identifiers* proposal, are included in this proposal by reference:

- **GA4GH Digest Serialization** is the process of converting an object to a canonical binary form based on JSON and inspired by similar (but unratified) JSON standards. This serialization for is used only for the purposes of computing a digest.
- **GA4GH Truncated Digest** is a convention for using [SHA-512](#), truncated to 24 bytes, and encoding using [base64url](#).
- **GA4GH Identification** is the CURIE-based syntax for constructing a namespaced and typed identifier for an object.

## 5.5.3 Type Prefixes

A GA4GH identifier is proposed to be constructed according to this syntax:

```
"ga4gh" ":" type_prefix "." digest
```

The *digest* is computed as described above. The *type\_prefix* is a short alphanumeric code that corresponds to the type of object being represented. If this proposal is accepted, this “type prefix map” would be administered by GA4GH. (Currently, this map is maintained in a YAML file within the *vr-spec* repository, but it would be relocated on approval of this proposal.)

We propose the following guidelines for type prefixes:

- Prefixes SHOULD be short, approximately 2-4 characters.
- Prefixes SHOULD be for concrete types, not polymorphic parent classes.
- A prefix MUST map 1:1 with a schema type.
- Variation Representation types SHOULD start with V.
- Variation Annotation types SHOULD start with A.

## 5.5.4 Administration

If accepted, administration of these guidelines should be transferred to a technical steering committee. If not accepted, the VR team will assume administration of the existing prefixes.

## 5.6 Implementations

The libraries and applications listed below have implemented the GA4GH Variation Representation Specification to store and exchange variation data. They are listed here to demonstrate VR utility and as a resource for those considering implementing VR-Spec. These packages are not supported by GA4GH.

### 5.6.1 Libraries

Libraries facilitate the use of the VR-Spec, but do not implement a particular use or application. Although there is only one library currently, it is expected that others will eventually appear as VR-Spec is adopted.

## vr-python: GA4GH VR Python Implementation

The [GA4GH VR Python Implementation](#) is an implementation for the GA4GH VR-Spec. It supports all types covered by the VR-Spec, implements Allele normalization and computed identifier generation, and provides “extra” features such as translation from HGVS, SPDI, and VCF formats. See [vr-python notebooks](#) for usage examples.

VR Specification MAY be used without using the Python implementation.

## 5.6.2 Applications and Web Services

Applications implement VR-Spec to support specific use cases. Projects known to implement VR-Spec are listed below. Descriptions are provided by the application authors.

### ClinGen Allele Registry

ClinGen Allele Registry<sup>1</sup> provides identifiers for more than 900 million variants. Each identifier (canonical allele identifiers: CAIDs) is an abstract concept which represents a group of identical variants based on alignment. Identifiers are retrievable irrespective of the reference sequence and normalization status.

As a Driver Project for GA4GH, [ClinGen Allele Registry](#) implements two standards: RefGet and VR in the first implementation.

The API endpoints that support data retrieval in this two key standards are summarized in the following table.

**HOST:** <https://reg.clinicalgenome.org/>

API Path	Parameters	Re- sponse Format	Example
<b>RefGet</b>			
[GET] /sequence/service-info	-	Refget v1.0.0	/sequence/service-info
[GET] /sequence/{id}	id => TRUNC512 digest for reference sequence	Refget v1.0.0	/sequence/vYfm5TA_F-_BtIGjzfzGOj8b6IK5hCTx
[GET] /sequence/{id}/metadata	id => TRUNC512 digest for reference sequence	Refget v1.0.0	/sequence/vYfm5TA_F-_BtIGjzfzGOj8b6IK5hCTx/metadata
<b>VR</b>			
[GET] /vrAllele?hgvs={hgvs}	hgvs => HGVS expression	VR v1.0	/vrAllele?hgvs=NC_000007.14:g.55181320A>T /vrAllele?hgvs=NC_000007.14:g.55181220del

Support for GA4GH refget and VR specs provided in ClinGen Allele Registry is independent from VR-Python. Support for this community standards is implemented in ClinGen Allele Registry through extension of code written in C++.

### BRCA Exchange

BRCA Exchange<sup>2</sup> proposes an API endpoint which will share the variant list in VR JSON model. Behind the scenes, all variants will be represented according to VR specification, in a separate table of the BRCA Exchange database,

<sup>1</sup> Pawliczek P, Patel RY, et al. *ClinGen Allele Registry links information about genetic variants*. Hum Mutat 11 (2018). doi:10.1002/humu.23637

<sup>2</sup> Cline, M.S., et al. *BRCA Challenge: BRCA Exchange as a global resource for variants in BRCA1 and BRCA2*. PLoS Genet. 2018 Dec 26;14(12):e1007752. doi:10.1371/journal.pgen.1007752

and the contents of this table will be served by the BRCA Exchange API. A stand-alone executable will leverage these data to integrate the BRCA Exchange variant set with the ClinGen allele registry.

## VICC Meta-knowledgebase

The Variant Interpretation for Cancer Consortium (VICC; <https://cancervariants.org>) has a collection of ~20K clinical interpretations associated with ~3,500 somatic variations and variation classes in a harmonized meta-knowledgebase<sup>3</sup> (see documentation at <http://docs.cancervariants.org>). Each interpretation is be linked to one or more variations or a variation class.

As a Driver Project for GA4GH, VICC is contributing to and/or adopting three GA4GH standards: VR, Variant Annotation (VA), and the Data Use Ontology (DUO). VICC supports queries on all VR computed identifiers at the searchAssociations endpoint ([vicc-docs](#)). Features associated with each interpretation are represented as VR-spec objects.

### Example queries:

- **Allele:** <https://search.cancervariants.org/api/v1/associations?size=10&from=1&q=ga4gh:VA.mJbjSsW541oOsOtBoX36Mppr6hMjbjFr>
- **SequenceLocation:** <https://search.cancervariants.org/api/v1/associations?size=10&from=1&q=ga4gh:SL.gJeEs42k4qeXOKy9CJ515c0v2HTu8s4K>
- **Text:** <https://search.cancervariants.org/api/v1/associations?size=10&from=1&q=ga4gh:VT.9Wer7KrxALcPRDRGVKOEzf9ZEKZpOKK0>

### References:

## 5.7 Truncated Digest Collision Analysis

The GA4GH Digest uses a truncated SHA-512 digest in order to generate a unique identifier based on data that defines the object. This notebook discusses the choice of SHA-512 over other digest methods and the choice of truncation length.

Source: Reece Hart, CC-BY

### 5.7.1 Conclusions

- The computational time for SHA-512 is similar to that of other digest methods. Given that it is believed to distribute input bits more uniformly with no increased computational cost, it should be preferred for our use (and likely most uses).
- 24 bytes (192 bits) of digest is *ample* for VR uses. Arguably, we could choose much smaller without significant risk of collision.

```
import hashlib
import math
import timeit

from IPython.display import display, Markdown

from ga4gh.vr.extras.utils import _format_time
```

(continues on next page)

---

<sup>3</sup> Wagner, A.H., et al. *A harmonized meta-knowledgebase of clinical interpretations of cancer genomic variants*. bioRxiv 366856 (2018). doi:10.1101/366856

(continued from previous page)

```
algorithms = {'sha512', 'sha1', 'sha256', 'md5', 'sha224', 'sha384'}
```

## 5.7.2 Digest Timing

This section provides a rationale for the selection of SHA-512 as the basis for the Truncated Digest.

```
def blob(l):
    """return binary blob of length l (POSIX only)"""
    return open("/dev/urandom", "rb").read(l)

def digest(alg, blob):
    md = hashlib.new(alg)
    md.update(blob)
    return md.digest()

def magic_run1(alg, blob):
    t = %timeit -o digest(alg, blob)
    return t

def magic_tfmt(t):
    """format TimeitResult for table"""
    return "{a} ± {s} ({b}, {w})".format(
        a = _format_time(t.average),
        s = _format_time(t.stdev),
        b = _format_time(t.best),
        w = _format_time(t.worst),
    )
```

```
blob_lengths = [100, 1000, 10000, 100000, 1000000]
blobs = [blob(l) for l in blob_lengths]
```

```
table_rows = []
table_rows += [{"algorithm"} + list(map(str, blob_lengths))]
table_rows += [{"-"} * len(table_rows[0])]
for alg in sorted(algorithms):
    r = [alg]
    for i in range(len(blobs)):
        blob = blobs[i]
        t = timeit.timeit(stmt='digest(alg, blob)', setup='from __main__ import alg,
↪blob, digest', number=1000)
        r += [_format_time(t)]
    table_rows += [r]
table = "\n".join(["|".join(map(str, row)) for row in table_rows])
display(Markdown(table))
```

algorithm	100	1000	10000	100000	1000000
md5	1.23 ms	2.7 ms	17.6 ms	147 ms	1.46 s
sha1	1.24 ms	2.28 ms	12.4 ms	110 ms	1.08 s
sha224	1.51 ms	3.66 ms	25.2 ms	235 ms	2.33 s
sha256	1.51 ms	3.62 ms	25.6 ms	241 ms	2.55 s
sha384	1.46 ms	4.01 ms	18.9 ms	168 ms	1.71 s
sha512	1.47 ms	3.13 ms	18.3 ms	165 ms	1.63 s

**Conclusion: SHA-512 computational time is similar to that of other digest methods.**

This result was not expected initially. On further research, there is a clear explanation: The SHA-2 series of digests (which includes SHA-224, SHA-256, SHA-384, and SHA-512) is defined using 64-bit operations. When an implementation is optimized for 64-bit systems (as used for these timings), the number of cycles is essentially halved when compared to 32-bit systems and digests that use 32-bit operations. SHA-2 digests are indeed much slower than SHA-1 and MD5 on 32-bit systems, but such legacy platforms are not relevant to the Truncated Digest.

---

### 5.7.3 Collision Analysis

Our question: **For a hash function that generates digests of length  $b$  (bits) and a corpus of  $m$  messages, what is the probability  $p$  that there exists at least one collision?** This is the so-called Birthday Problem [6].

Because analyzing digest collision probabilities typically involve choices of mathematical approximations, multiple “answers” appear online. This section provides a quick review of prior work and extends these discussions by focusing on the choice of digest length for a desired collision probability and corpus size.

Throughout the following, we’ll use these variables:

- $P$  = Probability of collision
- $P'$  = Probability of no collision
- $b$  = digest size, in bits
- $s$  = digest space size,  $s = 2^b$
- $m$  = number of messages in corpus

The length of individual messages is irrelevant.

#### References

- [1] <http://nvlpubs.nist.gov/nistpubs/FIPS/NIST.FIPS.180-4.pdf>
- [2] <https://tools.ietf.org/html/rfc3548#section-4>
- [3] <http://stackoverflow.com/a/4014407/342839>
- [4] <http://stackoverflow.com/a/22029380/342839>
- [5] <http://preshing.com/20110504/hash-collision-probabilities/>
- [6] [https://en.wikipedia.org/wiki/Birthday\\_problem](https://en.wikipedia.org/wiki/Birthday_problem)
- [7] [https://en.wikipedia.org/wiki/Birthday\\_attack](https://en.wikipedia.org/wiki/Birthday_attack)

## Background: The Birthday Problem

Directly computing the probability of one or more collisions,  $P$ , in a corpus is difficult. Instead, we first seek to solve for  $P'$ , the probability that a collision does not exist (i.e., that the digests are unique). Because there are only two outcomes,  $P + P' = 1$  or, equivalently,  $P = 1 - P'$ .

For a corpus of size  $m = 1$ , the probability that the digests of all  $m = 1$  messages are unique is (trivially) 1:

$$P' = s/s = 1$$

because there are  $s$  ways to choose the first digest from among  $s$  possible values without a collision.

For a corpus of size  $m = 2$ , the probability that the digests of all  $m = 2$  messages are unique is:

$$P' = 1 \times \left(\frac{s-1}{s}\right)$$

because there are  $s - 1$  ways to choose the second digest from among  $s$  possible values without a collision.

Continuing this logic, we have:

$$P' = \prod_{i=0}^{m-1} \frac{(s-i)}{s}$$

or, equivalently,

$$P' = \frac{s!}{s^m \cdot (s-m)!}$$

When the size of the corpus becomes greater than the size of the digest space, the probability of uniques is zero by the pigeonhole principle. Formally, the above equation becomes:

$$P' = \begin{cases} 1 & \text{if } m = 0 \\ \prod_{i=0}^{m-1} \frac{(s-i)}{s} & \text{if } 1 \leq m \leq s \\ 0 & \text{if } m > s \end{cases}$$

For the remainder of this section, we'll focus on the case where  $1 \leq m \ll s$ . In addition, notice that the brute force computation is not feasible in practice because  $m$  and  $s$  will be very large (both  $\gg 2^9$ ).

### Approximation #1: Taylor approximation of terms of $P'$

The Taylor series expansion of the exponential function is

$$e^x = 1 + x + \frac{x^2}{2!} + \frac{x^3}{3!} + \dots$$

For  $|x| \ll 1$ , the expansion is dominated by the first terms and therefore  $e^x \approx 1 + x$ .

In the above expression for  $P'$ , note that the product term  $(s-i)/s$  is equivalent to  $1 - i/s$ . Combining this with the Taylor expansion, where  $x = -i/s$  ( $m \ll s$ ):

$$\begin{aligned} P' &\approx \prod_{i=0}^{m-1} e^{-i/s} \\ &= e^{-m(m-1)/2s} \end{aligned}$$

(The latter equivalence comes from converting the product of exponents to a single exponent of a summation of  $-i/s$  terms, factoring out  $1/s$ , and using the series sum equivalence  $\sum_{j=0}^n j = n(n+1)/2$  for  $n \geq 0$ .)

### Approximation #2: Taylor approximation of $P'$

The above result for  $P'$  is also amenable to Taylor approximation. Setting  $x = -m(m-1)/2s$ , we continue from the previous derivation:

$$\begin{aligned} P' &\approx e^{-(m(m-1)/2s)} \\ &\approx 1 + \frac{-m(m-1)}{2s} \end{aligned}$$

### Approximation #3: Square approximation

For large  $m$ , we can approximate  $m(m-1)$  as  $m^2$  to yield

$$P' \approx 1 - m^2/2s$$

### Summary of equations

We may now summarize equations to approximate the probability of digest collisions.

Table 1: Summary of Equations

Method	Probability of uniqueness( $P'$ )	Probability of collision( $P = 1 - P'$ )	Assumptions	Source/Comparison
exact	$\prod_{i=0}^{m-1} \frac{(s-i)}{s}$	$1 - P'$	$1 \leq m \leq s$	[1]
Taylor approximation #1	$e^{-m(m-1)/2s}$	$1 - P'$	$m \ll s$	[1]
Taylor approximation #2	$1 - \frac{m(m-1)}{2s}$	$\frac{m(m-1)}{2s}$	(same)	[1]
Large square approximation	$1 - \frac{m^2}{2s}$	$\frac{m^2}{2s}$	(same)	[2] (where $s = 2^n$ )

- [1] [https://en.wikipedia.org/wiki/Birthday\\_problem](https://en.wikipedia.org/wiki/Birthday_problem)
- [2] <http://preshing.com/20110504/hash-collision-probabilities/>

## 5.7.4 Choosing a digest size

Now, we turn the problem around: What digest length  $b$  corresponds with a collision probability less than  $P$  for  $m$  messages?

From the above summary, we have  $P = m^2/2s$  for  $m \ll s$ . Rewriting with  $s = 2^b$ , we have the probability of a collision using  $b$  bits with  $m$  messages (sequences) is:

$$P(b, m) = m^2/2^{b+1}$$

Note that the collision probability depends on the number of messages, but not their size.



Solving for the number of messages (not used further in this analysis):

$$m(b, P) = \sqrt{P * 2^{b+1}}$$

Solving for the minimum number of *bits*  $b$  as a function of an expected number of sequences  $m$  and a desired tolerance for collisions of  $P$ :

$$b(m, P) = \log_2 \left( \frac{m^2}{P} \right) - 1$$

This equation is derived from equations that assume that  $m \ll s$ , where  $s = 2^b$ . When computing  $b(m, P)$ , we'll require that  $m/s \leq 10^{-3}$  as follows:

$$m/s \leq 10^{-3}$$

is approximately equivalent to:

$$m/2^b \leq 2^{-5}$$

$$m \leq 2^{b-5}$$

$$\log_2 m \leq b - 5$$

$$b \geq 5 + \log_2 m$$

```
def b2B3(b):
    """Convert bits b to Bytes, rounded up modulo 3

    We report modulo 3 because the intent will be to use Base64 encoding, which is
    most efficient when inputs have a byte length modulo 3. (Otherwise, the resulting
    string is padded with characters that provide no information.)

    """
    return math.ceil(b/8/3) * 3

def B(P, m):
    """return the number of bits needed to achieve a collision probability
    P for m messages

    Assumes m << 2^b.

    """
    b = math.log2(m / P) - 1
    if b < 5 + math.log2(m):
        return "-"
    return b2B3(b)
```

```
m_bins = [1E6, 1E9, 1E12, 1E15, 1E18, 1E21, 1E24, 1E30]
P_bins = [1E-30, 1E-27, 1E-24, 1E-21, 1E-18, 1E-15, 1E-12, 1E-9, 1E-6, 1E-3, 0.5]
```

```
table_rows = []
table_rows += [{"#m"} + [{"P<={P}"}.format(P=P) for P in P_bins]]
table_rows += [{"-"} * len(table_rows[0])]
for n_m in m_bins:
    table_rows += [{"{:g}"}.format(n_m)] + [B(P, n_m) for P in P_bins]]
table = "\n".join(["|".join(map(str, row)) for row in table_rows])
table_header = "### digest length (bytes) required for expected collision probability
↪ $P$ over $m$ messages \n"
display(Markdown(table_header + table))
```

digest length (bytes) required for expected collision probability  $P$  over  $m$  messages

#m	P<= 1e-30	P<= 1e-27	P<= 1e-24	P<= 1e-21	P<= 1e-18	P<= 1e-15	P<= 1e-12	P<= 1e-09	P<= 1e-06	P<= 0.001	P<= 0.5
1e+06	15	15	15	12	12	9	9	9	6	6	.
1e+09	18	15	15	15	12	12	9	9	9	6	.
1e+12	18	18	15	15	15	12	12	9	9	9	.
1e+15	21	18	18	15	15	15	12	12	9	9	.
1e+18	21	21	18	18	15	15	15	12	12	9	.
1e+21	24	21	21	18	18	15	15	15	12	12	.
1e+24	24	24	21	21	18	18	15	15	15	12	.
1e+30	27	24	24	24	21	21	18	18	15	15	.

---

## Bibliography

---

- [Gibson] Gibson Canonical JSON
- [OLPC] OLPC Canonical JSON
- [JCS] JSON Canonicalization Scheme