
OSBS Documentation

Release 1.0

Luiz Carvalho

Aug 16, 2019

1	Table of Contents	3
1.1	Administration and Maintenance	3
1.1.1	Understanding build parameters	3
1.1.2	Configuring osbs-client	3
1.1.3	Deploy OSBS on OpenShift	4
1.1.4	Setting up koji for container image builds	6
1.1.5	Priority of Container Image Builds	8
1.1.6	Troubleshooting	10
1.2	Building Container Images	10
1.2.1	Building images using fedpkg	10
1.2.2	Building images using koji	10
1.2.3	Building images using osbs-client	12
1.2.4	Accessing built images	12
1.2.5	Writing a Dockerfile	13
1.2.6	Image configuration	14
1.2.7	Content Sets	17
1.2.8	Using Artifacts from Koji	17
1.2.9	Image tags	19
1.2.10	Override Parent Image	19
1.2.11	Koji NVR	19
1.2.12	Isolated Builds	20
1.2.13	Yum repositories	21
1.2.14	Signing intent	21
1.2.15	Base image builds	22
1.2.16	Multistage builds	23
1.2.17	Operator manifests	24
1.3	Understanding the Build Process	24
1.3.1	Arrangement version 1 (delegation)	25
1.3.2	Arrangement version 2 (orchestrator creates filesystem)	27
1.3.3	Arrangement version 3 (Koji build created by orchestrator)	27
1.3.4	Metadata Fragment Storage	28
1.3.5	Arrangement version 4 (Multiple worker builds)	28
1.3.6	Arrangement version 5 (ODCS Integration)	28
1.3.7	Arrangement Version 6 (reactor_config_map)	30
1.3.8	Logging	30
1.3.9	Autorebuilds	31

1.4	Build Parameters	31
1.4.1	Environment vs User Parameters	31
1.4.2	Reactor Configuration	32
1.4.3	Atomic Reactor Plugins and Arrangement Version 6	34
1.4.4	Creating Builds	34
1.4.5	Rendering Plugins	35
1.4.6	Secrets	35
1.4.7	Site Customization	35
1.5	Contributing to OSBS	36
1.5.1	Setting up a (local) development environment	36
1.5.2	Contribution guidelines	36
1.6	Documentation of the OSBS tools	37
1.6.1	Koji Containerbuild	37
1.6.2	Atomic Reactor	38
1.6.3	OSBS Client	38
1.6.4	dockpulp	38
1.6.5	Ansible Playbook	38
1.6.6	Deploying and Running OSBS	38
2	Indices and tables	39

OSBS is a collection of tools, workflows and integration points that build and release layered container images.

OSBS hooks into [Koji](#) with the help of the [koji-containerbuild plugin](#), and uses [OpenShift builds](#) as Content Generators to produce layered images.

One can start an image build with `fedpkg`, using the `container-build` subcommand:

```
$ fedpkg container-build
```


1.1 Administration and Maintenance

1.1.1 Understanding build parameters

Please refer to *Build Parameters* for information on how options are configured within OSBS builds.

1.1.2 Configuring osbs-client

When submitting a new build request to OSBS as a user, this request is for an orchestrator build. When the orchestrator build wants to create worker builds it also does this through osbs-client.

As a result there are two osbs.conf files to consider:

- the one external to OSBS, for creating orchestrator builds, and
- the one internal to OSBS, stored in a Kubernetes secret (named by *client_config_secret*) in the orchestrator cluster

These can have the same content. The important features are discussed below.

can_orchestrate

The parameter `can_orchestrate` defaults to false. The API method `create_orchestrator_build` will fail unless `can_orchestrate` is true for the chosen instance section.

reactor_config_map

`reactor_config_map` specifies the name of a Kubernetes configmap holding *Server-side Configuration for atomic-reactor*. A pre-build plugin will read its value from REACTOR_CONFIG environment variable.

client_config_secret

When `client_config_secret` is specified this is the name of a Kubernetes secret (holding a key `osbs.conf`) for use by atomic-reactor when it creates worker builds. The `orchestrate_build` plugin is told the path to this.

token_secrets

When `token_secrets` is specified the specified secrets (space separated) will be mounted in the OpenShift build. When “:” is used, the secret will be mounted at the specified path, i.e. the format is:

```
token_secrets = secret:path secret:path ...
```

This allows an `osbs.conf` file (from `client_config_secret`) to be constructed with a known value to use for `token_file`.

Node selector

When an entry with the pattern `node_selector.platform` (for some *platform*) is specified, builds for this platform submitted to this cluster must include the given node selector, so as to run on a node of the correct architecture. This allows for installations that have mixed-architecture clusters and where node labels differentiate architecture.

If the value is `none`, this platform is the only one available and no node selector is required.

Platform description

When a section name begins with “platform:” it is interpreted not as an OSBS instance but as a platform description. The remainder of the section name is the platform name being described. The section has the following keys:

architecture (optional) the GOARCH for the platform – the platform name is assumed to be the same as the GOARCH if this is not specified

build_from

Specifies the build image (AKA “buildroot”) to be used for building container images, to be set in the `Build/BuildConfig` OpenShift objects under the `.spec.strategy.customStrategy.from` object. This can be a full reference to a specific container image in a container registry; or it can reference an `ImageStreamTag` object.

Updating this globally effectively deploys a different version of OSBS.

It takes one of the following forms:

imagestream:imagestream:tag use the image from the specified OpenShift `ImageStreamTag`

image:pullspec pull the image from the specified `pullspec` (including registry, repository, and either tag or digest)

1.1.3 Deploy OSBS on OpenShift

Authentication

The orchestrator cluster will have a service account (with edit role) created for use by Koji builders. Those Koji builders will use the service account’s persistent token to authenticate to the orchestrator cluster and submit builds to it.

Since the orchestrator build initiates worker builds on the worker cluster, it must have permission to do so. A service account should be created on each worker cluster in order to generate a persistent token. This service account should have edit role. On the orchestrator cluster, a secret for each worker cluster should be created to store the corresponding service account tokens. When osbs-client creates the orchestrator build it must specify the names of the secret files to be mounted in the BuildConfig. The orchestrator build will extract the token from the mounted secret file.

Server-side Configuration for atomic-reactor

This will list the maximum number of jobs that should be active at any given time for each cluster. It will also list worker clusters in order of preference. It may also contain additional environment configuration such as ODCS integration.

The runtime configuration will take the form of a Kubernetes secret with content as in the example below:

```
---
clusters:
  x86_64:
    - name: prod-x86_64-osd
      max_concurrent_builds: 16
    - name: prod-x86_64
      max_concurrent_builds: 6
      enabled: true
    - name: prod-other
      max_concurrent_builds: 2
      enabled: false

  ppc64le:
    - name: prod-ppc64le
      max_concurrent_builds: 6

odcs:
  signing_intents:
    - name: release
      keys: [AB123]
    - name: beta
      keys: [BT456, AB123]
    - name: unsigned
      keys: []
    # Value must match one of the names above.
  default_signing_intent: release
```

clusters

This maps each platform to a list of clusters and their concurrent build limits. For each platform to build for, a worker cluster is chosen as follows:

- clusters with the enabled key set to false are discarded
- each remaining cluster in turn will be queried to discover all currently active worker builds (not failed, complete, in error, or cancelled)
- the cluster load is computed by dividing the number of active worker builds by the specified maximum number of concurrent builds allowed on the cluster
- the worker build is submitted to whichever cluster has the lowest load; in this way, an even load distribution across all clusters is enforced

There are several throttles preventing too many worker builds being submitted. Each worker cluster can be configured to only schedule a certain number of worker builds at a time by setting a default resource request. The orchestrator cluster will similarly only run a certain number of orchestrator builds at a time based on the resource request in the orchestrator build JSON template. A Koji builder will only run a certain number of containerbuild tasks based on its configured capacity.

This mechanism can also be used to temporarily disable a worker cluster by removing it from the list or adding `enabled: false` to the cluster description for each platform.

odcs

Section used for ODCS related configuration.

signing_intents List of signing intents in their restrictive order.

default_signing_intent Name of the default signing intent to be used when one is not provided in `container.yaml`.

1.1.4 Setting up koji for container image builds

Example configuration file: Koji builder

The configuration required for submitting an orchestrator build is different than that required for the orchestrator build itself to submit worker builds. The `osbs.conf` used by the Koji builder would include:

```
[general]
build_json_dir = /usr/share/osbs/

[platform:x86_64]
architecture = amd64

[default]
openshift_url = https://orchestrator.example.com:8443/
build_image = example.registry.com/buildroot:blue

distribution_scope = public

can_orchestrate = true # allow orchestrator builds

# This secret contains configuration relating to which worker
# clusters to use and what their capacities are:
reactor_config_map = reactorconf

# This secret contains the osbs.conf which atomic-reactor will use
# when creating worker builds
client_config_secret = osbsconf

# These additional secrets are mounted inside the build container
# and referenced by token_file in the build container's osbs.conf
token_secrets =
    workertoken:/var/run/secrets/atomic-reactor/workertoken

# and auth options, registries, secrets, etc

[scratch]
```

(continues on next page)

(continued from previous page)

```

openshift_url = https://orchestrator.example.com:8443/
build_image = example.registry.com/buildroot:blue

reactor_config_map = reactorconf
client_config_secret = osbsconf
token_secrets = workertoken:/var/run/secrets/atomic-reactor/workertoken

# All scratch builds have distribution-scope=private
distribution_scope = private

# This causes koji output not to be configured, and for the low
# priority node selector to be used.
scratch = true

# and auth options, registries, secrets, etc

```

This shows the configuration required to submit a build to the orchestrator cluster using `create_prod_build` or `create_orchestrator_build`.

Also shown is the configuration for scratch builds, which will be identical to regular builds but with “private” distribution scope for built images and with the `scratch` option enabled.

Example configuration file: inside builder image

The `osbs.conf` used by the builder image for the orchestrator cluster, and which is contained in the Kubernetes secret named by `client_config_secret` above, would include:

```

[general]
build_json_dir = /usr/share/osbs/

[platform:x86_64]
architecture = amd64

[prod-mixed]
openshift_url = https://worker01.example.com:8443/
node_selector.x86_64 = beta.kubernetes.io/arch=amd64
node_selector.ppc64le = beta.kubernetes.io/arch=ppc64le
use_auth = true

# This is the path to the token specified in a token_secrets secret.
token_file =
    /var/run/secrets/atomic-reactor/workertoken/worker01-serviceaccount-token

# The same builder image is used for the orchestrator and worker
# builds, but used with different configuration. It should not
# be specified here.
# build_image = registry.example.com/buildroot:blue

# and auth options, registries, secrets, etc

[prod-osd]
openshift_url = https://api.prod-example.openshift.com/
node_selector.x86_64 = none
use_auth = true
token_file =

```

(continues on next page)

(continued from previous page)

```
/var/run/secrets/atomic-reactor/workertoken/osd-serviceaccount-token  
# and auth options, registries, secrets, etc
```

In this configuration file there are two worker clusters, one which builds for both x86_64 and ppc64le platforms using nodes with specific labels (prod-mixed), and another which only accepts x86_64 builds (prod-osd).

Supporting Operator Manifests extraction

To support the `operator` manifests extraction, as described in *Operator manifests*, the `operator-manifests` BType must be created in koji. This is done by running

```
koji call addBType operator-manifests
```

Enabling integration with OMPS service

To enable optional integration with `OMPS` service to allow automatically pushing operators manifests to application registry (like `quay`) `omps` configuration section must be added into `atomic-reactor` configuration. See configuration details in `config.json`.

Example:

```
omps :  
  omps_url: https://omps-service.example.com  
  omps_namespace: organization  
  omps_secret: /dir/where/token/file/will/be/mounted  
  appregistry_url: https://quay.io/cnr
```

1.1.5 Priority of Container Image Builds

For a build system it's desirable to prioritize different kinds of builds in order to better utilize resources. Unfortunately, OpenShift's scheduling algorithm does not support setting a priority value for a given build. To achieve some sort of build prioritization, we can leverage node selectors to allocate different resources to different build types.

Consider the following types of container builds:

- *scratch build*
- *explicit build*
- *auto rebuild*

As the name implies, *scratch builds* are meant to be used as a one-off unofficial container build. No guarantees are made for storing the created container images long term. It's also not meant to be shipped to customers. These are clearly low priority builds.

Explicit builds are those triggered by a user, either directly via `fedpkg/koji` CLI, or indirectly via `pungi` (as in the case of base images). These are official builds that will go through the normal life cycle of being tested and, eventually, shipped.

Auto rebuilds are created by OpenShift when a change in the parent image is detected. It's likely that layered images should be rebuilt in order to pick up changes in latest parent image.

For any *explicit build* or *auto rebuild*, they may or may not be high priority. In some cases, a build is high priority due to a security fix, for instance. In other cases, it could be due to an in-progress feature. For this reason, it cannot be said that all *explicit builds* are higher priority than *auto rebuilds*, or vice-versa.

However, *auto rebuilds* have the potential of completely consuming OSBS's infrastructure. There must be some mechanism to throttle the amount of *auto rebuilds*. For this reason, OSBS uses a different node selector for each different build type:

- *scratch build*: `builds_scratch=true`
- *explicit build*: `builds_explicit=true`
- *auto rebuild*: `builds_auto=true`

By controlling each type of builds individually, OSBS will have the necessary control for adjusting its infrastructure.

For example, consider an OpenShift cluster with 5 compute nodes:

Node	<code>builds_scratch=true</code>	<code>builds_explicit=true</code>	<code>builds_auto=true</code>
Node 1	✓	✓	✓
Node 2		✓	
Node 3			✓
Node 4		✓	✓
Node 5		✓	✓

In this case, *scratch builds* can be scheduled only on **Node 1**; *explicit builds* on any node except **Node 3**; and auto builds on any node except **Node 2**.

Worker Builds Node Selectors

The build type node selectors are only applied to worker builds. This gives more granular control over available resources. Since worker builds are the ones that actually perform the container image building steps, it requires more resources than orchestrator builds. For this reason, a deployment is more likely to have more nodes available for worker builds than orchestrator builds. This is important because the amount of nodes available defines the granularity of how builds are spread across the cluster.

For instance, consider a large deployment in which only 2 orchestrator nodes are needed. If build type node selectors are applied to orchestrator builds, builds can only be throttled by a factor of 2. In contrast, this same deployment may use 20 worker builds, allowing builds to be throttled by a factor of 20.

Orchestrator Builds Allocation

Usually in a deployment, the amount of allowed orchestrator builds matches the amount of allowed worker builds for any given platform. Additional orchestrator builds should be allowed to fully leverage the build type node selectors on worker builds since some orchestrator builds will wait longer than usual for their worker builds to be scheduled. This provides a buffer that allows OpenShift to properly schedule worker builds according to their build type via node selectors. Because OpenShift scheduling is used, worker builds of same type will run in the order they were submitted.

Koji Builder Capacity

The task load of the Koji builders used by OSBS will not reflect the actual load on the OpenShift cluster used by OSBS. The disparity is due to auto rebuilds not having a corresponding Koji task. This creates a scenario where a buildContainer Koji task is started, but the OpenShift build remains in pending state. The Koji builder capacity should be set based on how many nodes allow **scratch builds** and/or **explicit builds**. In the example above, there are 4 nodes that allow such builds.

The log file, `osbs-client.log`, in a Koji task gives users a better understanding of any delays due to scheduling.

1.1.6 Troubleshooting

Obtaining Atomic Reactor stack trace

atomic-reactor captures *SIGUSR1* signals. When receiving such signal, atomic-reactor responds by showing the current stack trace for every thread it was running when the signal was received.

This feature can be used to inspect either the orchestrator or a specific worker build. It is specially useful to diagnose stuck builds.

1.2 Building Container Images

1.2.1 Building images using fedpkg

Following command submits a build to Koji:

```
fedpkg container-build --target=<target>
```

For detailed Fedora workflow please visit [Fedora Layered Image Build System guide](#).

1.2.2 Building images using koji

Using a koji client CLI directly you have to specify git repo URL and branch:

```
koji container-build <target> <repourl>#<branch/ref> --git-branch <branch>
```

Streamed build logs

When atomic-reactor in the orchestrator build runs its *orchestrate_build* plugin and watches the builds, it will stream in the logs from those builds and emit them as logs itself, with the platform name as one of the fields. The extra fields for these worker logs will be: platform, level.

Note that there will be a single Koji task with a single log output, which will contain logs from multiple builds. When watching this using `koji watch-logs <task id>` the log output from each worker build will be interleaved. To watch logs from a particular worker build image owners can use `koji watch-logs <task id> | grep -w x86_64`.

Configuring koji-containerbuild for koji CLI

To be able to build container images from CLI, `koji-containerbuild` plugin must be installed.

No additional configuration is required. Everything should be set by `koji` package.

Koji Build Results

Koji Web

This is the easiest way to access information about OSBS builds.

List Builds

Navigate to the “Builds” tab in brew and set the “Type” filter to `image`.

Get Build

If you have the build ID, go to https://<KOJI_WEB_URL>/buildinfo?buildID=<build-ID>

If you want to search build by its name or part of name, use the search box on top of the page. For example, `redis-*` and select “Builds”.

In koji build you can find a lot information about build, some noticeable are:

- pull specifications for the build in the ‘Extra’ section `image.index.pull`, for digest type in `image.index.digests`
- list of image archives for each specific architecture for which build was executed (for more detailed information about specific archive click on ‘info’)

Also in the “Extra” section, `docker.config` shows (parts of) the [docker image JSON description](#), as well it indicates container image API version.

See [atomic-reactor documentation](#) for a full description of the Koji container image metadata.

Get Task

All OSBS builds triggered via koji have a task linked to them. On the Build info page click on the `buildContainer` link labelled ‘Task’ to find the task responsible for the build.

Build Logs

The logs can be found in task’s “Output” section (older builds will have that section empty as logs has been garbage collected), or in build’s “Logs” section (persist after garbage collection).

Koji CLI

List Builds

List all image (OSBS) builds:

```
koji call listBuilds type=image
```

Apply filter for more specific search:

```
koji call listBuilds type=image createdAfter='2016-02-01 00:00:00' prefix=redis
```

Search for builds of specific users:

```
koji call listUsers prefix=<user> # get user-ID
koji call listbuilds type=image userId=<user-ID>
```

Get Build

Retrieve build information from either the build ID or the build NVR:

```
koji buildinfo <build-ID or build-NVR>
```

Get Task

The “Extra” field in build result is useful to track the task that originated this build. Use the “container_koji_task_id”, or “filesystem_koji_task_id”, to get more info about task:

```
koji taskinfo <task-ID>
```

Cancel Task

You can cancel a buildContainer brew task as for other types of task, and this will cancel the OSBS build:

```
koji cancel <task-ID>
```

Build Notifications

Package owners and build submitter will be notified via email about build.

1.2.3 Building images using osbs-client

osbs-client provides osbs CLI command for interaction with OSBS builds and allows creation of new builds directly without koji-client.

Please note that mainly koji and fedpkg commands should be used for building container images instead of direct osbs-client calls.

To execute build via osbs-client CLI use:

```
osbs build -g <git_repo_url> -b <branch> -u <username> --git-commit <commit> [--  
→platforms=x86_64] [-i <instance>]
```

To see full list of options execute:

```
osbs build --help
```

To see all osbs-client subcommands execute:

```
osbs --help
```

Please note that osbs-client must be configured properly using config file /etc/osbs.conf. Please refer to *osbs-client configuration section* for configuration examples.

1.2.4 Accessing built images

Information about registry and image name is included in koji build. Use one of names listed in extra.image.index.pull to pull built image from a registry.

1.2.5 Writing a Dockerfile

A Dockerfile is required for building container images in OSBS. It must be placed at the root of git repository. There can only be a single Dockerfile per git repository branch.

Some labels are required to be defined:

- `com.redhat.component`: the value of this label is used when importing a build into Koji via content generator API. We recommend that all images use a component string ending in `-container` here, so that you can easily distinguish these container builds from other non-container builds in Koji.
- `name`: value is used to define the repository name in container registry to push built image. Limit this to lowercase alphanumerical values with the possibility to use dash as a word separator. A single `/` is also allowed. `.` is not allowed in the first section. For instance, `fed/rsyslog` and `rsyslog` are allowed, but `fe.d/rsyslog` and `rsys.log` aren't.
- `version`: used as the version portion of Koji build NVR, as well as, for the version tag in container repository.

For example:

```
LABEL com.redhat.component=rsyslog-container \
      name=fedora/rsyslog \
      version=32
```

When OSBS builds a container image that defines the above labels, a Koji build will be created in the format `rsyslog-container-32-X`. Where `X` is the release value. The container image will be available in container registry at: `my-container-registry.example.com/fedora/rsyslog:32`.

The `release` label can also be used to specify the release value use for Koji build. When omitted, the release value will be automatically determined by querying Koji's `getNextRelease` API method.

Other labels are set automatically when not set in the Dockerfile:

- `build-date`: Date/Time image was built as RFC 3339 date-time.
- `architecture`: Architecture for the image.
- `com.redhat.build-host`: OpenShift node where image was built.
- `vcs-ref`: A reference within the version control repository; e.g. a git commit.
- `vcs-type`: The type of version control used by the container source. Currently, only git is supported.

Although it is also possible to automatically include the `vcs-url` label, the default set of automatically included labels does not include the label.

Sites wanting to include the `vcs-url` label to the set should do so by using custom `orchestrator_inner:n.json` and `worker_inner:n.json` specifying the full set of implicit labels for the `add_labels_in_dockerfile` plugin:

```
{
  "args": {
    "auto_labels": ["build-date", "architecture", "vcs-type", "vcs-url", "vcs-ref",
  ↪ "com.redhat.build-host"]
  },
  "name": "add_labels_in_dockerfile"
},
```

Finally, it is also possible to set additional labels through the reactor configuration, by setting the label key values in `image_labels`.

1.2.6 Image configuration

Some aspects of the container image build process are controlled by a file in the git repository named `container.yaml`. This file need not be present, but if it is it must adhere to the `container.yaml` schema.

An example:

```
---
platforms:
  # all these keys are optional

  only:
  - x86_64  # can be a list (as here) or a string (as below)
  - ppc64le
  - armhfp
  not: armhfp

go:
  modules:
  - module: example.com/go/packagename
  - module: example.com/go/anotherpackage
    archive: anotherpackage.tar.gz
    path: anotherpackage-v0.54.1

compose:
  # used for requesting ODCS compose of type "tag"
  packages:
  - nss_wrapper # package name, not an NVR.
  - httpd
  - httpd-devel
  # used for requesting ODCS compose of type "pulp"
  pulp_repos: true
  # used for requesting ODCS compose of type "module"
  modules:
  - "module_name1:stream1"
  - "module_name2:stream1"
  # Possible values, and default, are configured in OSBS environment.
  signing_intent: release
  # used for inheritance of yum repos and ODCS composes from baseimage build
  inherit: true

image_build_method: docker_api
```

platforms

Keys in this map relate to multi-platform builds. The full set of platforms for which builds may be required will come initially from the Koji build tag associated with the build target, or from the `platforms` parameter provided to the `create_orchestrator_build` API method when Koji is not used.

only list of platform names (or a single platform name as a string); this restricts the platforms to build for using set intersection

not list of platform names (or a single platform name as a string); this restricts the platforms to build for using set difference

go

Keys in this map relate to source code in the Go language which the user intends to be built into the container image. They are responsible for building the source code into an executable themselves. Keys here are only for identifying source code which was used to create the files in the container image.

modules sequence of mappings containing information for the Go modules (packages) built and shipped in the container image. The accepted mappings are listed below.

module top-level go module (package) name to be built in the image. If `modules` is specified, this entry is required.

archive possibly-compressed archive containing full source code including vendored dependencies.

path path to directory containing source code (or its parent), possibly within archive.

compose

This section is used for requesting yum repositories at build time. When this section is defined, a compose will be requested by using ODCS.

packages list of package names to be included in ODCS compose. Package in this case refers to the “name” portion of the NVR (name-version-release) of an RPM, not the Koji package name. Packages will be selected based on the Koji build tag of the Koji build target used. The following command is useful in determining which packages are available in a given Koji build tag: `koji list-tagged --inherit --latest TAG`

If “packages” key is declared but is empty (`packages: []` in YAML), the compose will include all packages from the Koji build tag of the Koji build target.

ODCS will work more quickly if you only specify the minimum set of packages you need here, but if you want to avoid hard-coding a complete package list in `container.yaml`, you can use the empty list to just make everything available.

pulp_repos boolean to control whether or not an ODCS compose of type “pulp” should be requested. If set to `true`, `content_sets.yml` must also be provided. A compose will be requested for each architecture in `content_sets.yml`. See [image_build_method](#).

modules list of modules for requesting ODCS compose of type “module”.

signing_intent used for verifying packages in yum repositories are signed with expected signing keys. The possible values for signing intent are defined in OSBS environment. See [odcs](#) section for environment configuration details, and full explanation of [Signing intent](#).

inherit boolean to control whether or not to inherit yum repositories and odc composes from baseimage build, default `false`. Scratch and isolated builds do not support inheritance and `false` is always assumed.

include_unpublished_pulp_repos If you set `include_unpublished_pulp_repos: true` under the `compose` section in `container.yaml`, the ODCS composes can pull from unpublished pulp repositories. The default is `false`. Use this setting to make pre-release RPMs available to your container images. Use caution with this setting, because you could end up publicly shipping container images with RPMs that you have not exposed publicly otherwise.

If there is a “modules” key, it must have a non-empty list of modules. The “packages” key, and only the “packages” key, can have an empty list.

The “packages”, “modules” and “pulp_repos” keys can be used mutually.

Automatic Rebuilds

This section specifies whether and how a build should be rebuilt based on changes to the base parent image.

By default autorebuild is disabled. The feature can be enabled by making some changes in your dist-git repo and submitting a container build.

Enabling Automatic Rebuilds

Enable autorebuild in config:

```
fedpkg container-build-setup --set-autorebuild true
```

This will create/update the `.osbs-repo-config` file. The file will be automatically added for commit.

Finally, add all modified files, commit, and push modifications. For these **changes to take place, request a container build** as usual:

```
fedpkg container-build
```

This must be a regular non-scratch/non-isolated build. The steps above apply to a single branch in your dist-git repo. It must be repeated for each branch you wish to enable the feature.

The next time the parent image used by your container image is updated, your image will be automatically rebuilt.

Disabling Automatic Rebuilds

First, use `fedpkg` to disable autorebuild:

```
fedpkg container-build-setup --set-autorebuild false
```

This will create/update the `.osbs-repo-config` file. The file will be automatically added for commit.

Finally, commit and push modifications. For these **changes to take place, request a container build** as usual:

```
fedpkg container-build
```

This must be a regular non-scratch/non-isolated build. The steps above apply to a single branch in your dist-git repo. It must be repeated for each branch you wish to disable the feature.

`image_build_method`

This string indicates which build-step plugin to use in order to perform the layered image build, on a per-image basis. The `docker_api` plugin uses the `docker-py` module to run the build via the Docker API, while the `imagebuilder` plugin uses the `imagebuilder` utility to do the same. Both have similar capabilities, but the `imagebuilder` plugin brings two advantages:

1. It performs all changes made in the build in a single layer, which is a little more efficient and removes the need to squash layers afterward.
2. It can perform multistage builds without requiring Docker 17+ (which Red Hat and Fedora do not support).

In order to use the `imagebuilder` plugin, the `imagebuilder` binary must be available and in the `PATH` for the builder image, or an error will result.

1.2.7 Content Sets

The file `content_sets.yml` is used to define the content sets relevant to the container image. This is relevant if RPM packages in container image are in pulp repositories. See `pulp_repos` in *compose* for how this file is used during build time.

An example:

```
---
x86_64:
- server-rpms
- server-extras-rpms

ppx64le:
- server-for-power-le-rpms
- server-extras-for-power-le-rpms
```

1.2.8 Using Artifacts from Koji

During a container build, it might be desirable to fetch some artifacts from an existing Koji build. For instance, when building a Java-based container, JAR archives from a Koji build are required to be added to the resulting container image.

The atomic-reactor pre-build plugin, `fetch_maven_artifacts`, can be used for including non-RPM content in a container image during build time. This plugin will look for the existence of two files in the git repository in the same directory as the Dockerfile: `fetch-artifacts-koji.yaml` and `fetch-artifacts-url.yaml`. (See `fetch-artifacts-url.json` and `fetch-artifacts-nvr.json` for their YAML schema.)

The first is meant to fetch artifacts from an existing Koji build. The second allows specific URLs to be used for fetching artifacts. `fetch-artifacts-koji.yaml` will be processed first.

fetch-artifacts-koji.yaml

```
- nvr: foobar # All archives will be downloaded

- nvr: com.sun.xml.bind.mvn-jaxb-parent-2.2.11.redhat_4-1
  archives:
    # pull a specific archive
    - filename: jaxb-core-2.2.11.redhat-4.jar
      group_id: org.glassfish.jaxb

    # group_id omitted - multiple archives may be downloaded
    - filename: jaxb-jxc-2.2.11.redhat-4.jar

    # glob support
    - filename: txw2-2.2.11.redhat-4-*.jar

    # pull all archives for a specific group
    - group_id: org.glassfish.jaxb

    # glob support with group_id restriction
    - filename: txw2-2.2.11.redhat-4-*.jar
      group_id: org.glassfish.jaxb
```

(continues on next page)

(continued from previous page)

```
# causes build failure due to unmatched archive
- filename: archive-filename-with-a-typo.jar
```

Each archive will be downloaded to `artifacts/<mavenfile_path>` at the root of git repository. It can be used from Dockerfile via `ADD/COPY` instruction:

```
COPY \
  artifacts/org/glassfish/jaxb/jaxb-core/2.2.11.redhat-4/jaxb-core-2.2.11.redhat-4.
  ↪jar /jars
```

The directory structure under `artifacts` directory is determined by `koji.PathInfo.mavenfile` method. It's essentially the end of the URL after `/maven/` when downloading archive from Koji Web UI.

Upon downloading each file, the plugin will verify the file checksum by leveraging the checksum value in the archive info stored in Koji. If checksum fails, container build fails immediately. The checksum algorithm used is dictated by Koji via the `checksum_type` value in the archive info.

If build specified in `nvr` attribute does not exist, the container build will fail.

If any of the archives does not produce a match, the container build will fail. In other words, every item in the archives list is expected to match at least one archive from specified Koji build. However, the build will not fail if it matches multiple archives.

Note that only archives of maven type are supported. If in the `nvr` supplied an archive item references a non maven artifact, the container build will fail due to no archives matching request.

fetch-artifacts-url.yaml

```
- url: http://download.example.com/JBossDV/6.3.0/jboss-dv-6.3.0-teiid-jdbc.jar
  md5: e85807e42460b3bc22276e6808839013
- url: http://download.example.com/JBossDV/6.3.0/jboss-dv-6.3.0-teiid-javadoc.jar
  # Use different hashing algorithm
  sha256: 3ba8a145a3b1381d668203cd73ed62d53ba8a145a3b1381d668203cd73ed62d5
  # Optionally, overwrite target name
  target: custom-dir/custom-name.jar
```

Each archive will be downloaded to `artifacts/<target_path>` at the root of git repository. It can be used from Dockerfile via `ADD/COPY` instruction:

```
COPY artifacts/jboss-dv-6.3.0-teiid-jdbc.jar /jars/
COPY artifacts/custom-dir/custom-name.jar /jars/
```

By default, `target_path` is set to the filename from provided url. It can be customized by providing a target. The target value can be either a filename, `archive.jar`, or also include a path, `my/path/archive.jar`, for easier archive management.

The `md5`, `sha1`, `sha256` attributes specify the corresponding hash to be used when verifying artifact was downloaded properly. At least one of them is required. If more than one is defined, multiple hashes will be computed and verified.

Koji Build Metadata Integration

In the future, a reference of each artifact fetched by OSBS will be added to the koji build metadata once imported via content generator API. The list of components for the container image in output list will include the fetched artifacts in addition to the installed RPMs.

1.2.9 Image tags

The output from atomic-reactor includes container images tagged into a registry (or Pulp, if Pulp integration is enabled). In addition, when multi-platform builds are enabled each set of images will be grouped into a manifest list, which itself is tagged.

While the repository name is specified by the `name` label in the Dockerfile, the tags used within the repository are:

- a unique tag including the timestamp (this tag is the only tag applied for scratch builds)
- `{version}-{release}` (the `version` and `release` labels together)

If the `tags` value is set in `container.yaml`, those tags are applied to the image as floating tags.

If `tags` is not used in `container.yaml`, the following tags are applied:

- `{version}` (the `version` label)
- `latest`
- any additional tags named in the `additional-tags` file

These tags are applied to the manifest list or, if multi-platform image builds are not enabled (see [group_manifests](#)), to the sole image manifest resulting from the build.

1.2.10 Override Parent Image

The parent image used for building a layered image is determined by the `FROM` instruction in the Dockerfile by default. Users can override this behavior by specifying a koji parent build via the `koji_parent_build` API parameter. When given, the image reference in the provided koji parent build will be used as the value of the `FROM` instruction. The same source registry restrictions apply.

Additionally, the koji parent build must use the same container image repository as the value of the `FROM` instruction in Dockerfile. For instance, if the Dockerfile states `FROM fedora:27`, the koji parent build has to be of a container image that pushed to the `fedora` repository. The koji parent build may refer to a `fedora:26` image, but using a koji parent build for an image that was pushed to `rsyslog` will cause a build failure.

This behavior requires koji integration to be enabled in the OSBS environment.

1.2.11 Koji NVR

When koji integration is enabled, every container image build requires a unique Name-Version-Release, NVR. The Name and Version are extracted from the **name** and **version** labels in Dockerfile. Users can also use the **release** label to hard code the release value, although this requires a git commit for every build to change the value. A better alternative is to leave off the **release** label which causes OSBS to query koji for what the next release value should be. This is done via koji's `getNextRelease` API method. In either case, the release value can also be overridden by using the `release` API parameter.

During the build process, OSBS will query koji for the builds of all parent images using their NVRs. If any of the parent image builds is not found in koji, or if NVR information cannot be extracted from the parent image, OSBS assumes that the parent image was not built by OSBS and halts the current build. In other words, an image cannot be built using a parent image which has not been built by OSBS. It is possible to disable this feature through reactor configuration. See the `skip_koji_check_for_base_image` option in [config.json](#) for further reference.

Digests verification

Once OSBS has the koji build information for a parent image, it compares the digest of the parent image manifest available in koji metadata (stored when that parent build had completed) with the actual parent image manifest digest

(calculated by OSBS during the build). In case manifests do not match, the build will fail and the parent image **must** be rebuilt in OSBS before it is used in another build.

If the manifest in question is a manifest list and the digests comparison fail, the V2 manifest digests in the manifest list will be compared with the koji build archive metadata digests. In this case, OSBS will only halt the build with an error, advising rebuilding the parent image, if the V2 manifest digests in the manifest list do not match the analogous koji information. This behavior can be deactivated through the `deep_manifest_list_inspection` option. See [config.json](#) for further reference.

It is also possible to have OSBS only warn about any digest mismatches (instead of halting the build with an error). This is done by setting the `fail_on_digest_mismatch` option to `false` in the [config.json](#) file.

1.2.12 Isolated Builds

When a build is created via OSBS, the built container image is pushed to the container registry updating various tag references in the container registry. Some of these tag references are unique, while others are meant to transition over time to reference a newer image, for instance `latest` and `{version}` tags. In other words, building a container image usually updates these transient, non-unique, tags in container registry. In some cases, this is not desired.

Consider the case of a container image that includes one, or more, packages that have recently been identified as containing security vulnerabilities. To address this issue, a new container image must be built. The difference for this build is that only changes related to the security fix must be applied. Any unrelated development that has occurred should be ignored. It would not be correct to update the `latest` tag reference with this build. To achieve this, the concept of isolated builds was introduced.

As an example, let's use the image `rsyslog` again. At some point the container image 7.4-2 is released (version 7.4, release 2). Soon after, minor bug fixes are addressed in 7.4-3, a new feature is added to 7.4-4, and so on. A security vulnerability is then discovered in the released image 7.4-2. To minimize disruption to users, you may want to build a patched version of 7.4-2, say 7.4-2.1. The packages installed in this new container image will differ from the former only when needed to address the security vulnerability. It will not include the minor bug fixes from 7.4-3, nor the new features added in 7.4-4. For this reason, updating the `latest` tag is considered incorrect.

```
7.4 version
|
|_____
|      |1 release
|
|_____
|      |2 release      |2.1 release
|
|_____
|      |3 release
|
|_____
|      |4 release
|
```

To start an isolated build, use the `isolated` boolean parameter. Due to the nature of isolated builds, the release value must be set via the `release` parameter which must match the format `^\d+\.\d+(\.\d+)?$`

Isolated builds will only update the `{version}-{release}` unique tag and the primary tag in target container registry.

1.2.13 Yum repositories

In most cases, part of the process of building container images is to install RPM packages. These packages must come from yum repositories. There are various methods for making a yum repository available for your container build.

ODCS compose

The preferred method for injecting yum repositories in container builds is by enabling ODCS integration via the “compose” key in `container.yaml`. See *Image configuration* and *Signing intent* for details.

RHEL subscription

If the underlying host is Red Hat Enterprise Linux (RHEL), its subscriptions will be made available during container builds. Note that changes in the underlying host to enable/disable yum repositories is not reflected in container builds. `Dockerfile` must explicitly enable/disable yum repositories as needed. Although this is desirable in most cases, in an OSBS deployment it can cause unexpected behavior. It’s recommended to disable subscription for RHEL hosts when they are being used by OSBS.

Yum repository URL

As part of a build request, you may provide the `repo-url` parameter with the URL to a yum repository file. This file is injected into the container build. Current OSBS versions support the combination of ODCS composes with repository files. This is a change to OSBS former behavior, where the ODCS compose would be disabled if a repository file URL was given.

Koji tag

When Koji integration is enabled, a Koji build target parameter is provided. The yum repository for the build tag of target is automatically injected in container build. This behavior is disabled if either “ODCS compose” or “Yum repository URL” are used.

Inherited yum repository and ODCS compose

If you want to inherit yum repositories and ODCS composes from baseimage build, you can enable it via the “inherit” key under “compose” in `container.yaml`. Does not support scratch or isolated builds. See *Image configuration*.

1.2.14 Signing intent

When the “compose” section in `container.yaml` is defined, ODCS composes will be requested at build time. ODCS is aware of RPM package signatures and can be used to ensure that only signed packages are added to the generated yum repositories. Ultimately, this can be used to ensure a container image only contains packages signed by known signing keys.

Signing intents are an abstraction for signing keys. It allows the OSBS environment administrator to define which signing keys are valid for different types of releases. See *odcs* section for details.

For instance, an environment may provide the following signing intents: `release`, `beta`, and `unsigned`. Each one of those intents is then mapped to a list of signing keys. These signing keys are then used during ODCS compose creation. The packages to be included must have been signed by any of the signing keys listed. In the example above, the intents could be mapped to the following keys:

```
# Only include packages that have been signed by "my-release-key"
release -> my-release-key
# Include packages that have been signed by either "my-beta-key" or
# "my-release-key"
beta -> my-beta-key, my-release-key
# Do not check signature of packages - may include unsigned packages
unsigned -> <empty>
```

The signing intents are also defined by their restrictive order, which will be enforced when building layered images. For instance, consider the case of two images, X and Y. Y uses X as its parent image (FROM X). If image X was built with “beta” intent, image Y’s intent can only be “beta” or “unsigned”. If the dist-git repo for image Y has it configured to use “release” intent, this value will be downgraded to “beta” at build time.

Automatically downgrading the signing intent, instead of failing the build, is important for allowing a hierarchy of layered images to be built automatically by ImageChangeTriggers. For instance, with Continuous Integration in mind, a user may want to perform daily builds without necessarily requiring signed packages, while periodically also producing builds with signed content. In this case, the `signing_intent` in `container.yaml` can be set to `release` for all the images in hierarchy. Whether or not the layered images in the hierarchy use signed packages can be controlled by simply overriding the signing intent of the top most ancestor image. The signing intent of the layered images would then be automatically adjusted as needed.

In the case where multiple composes are used, the least restrictive intent is used. Continuing with our previous signing intent example, let’s say a container image build request uses two composes. Compose 1 was generated with no signing keys provided, and compose 2 was generated with “my-release-key”. In this case, the intent is “unsigned”.

Compose IDs can be passed in to OSBS in a build request. If one or more compose IDs are provided, OSBS will classify the intent of the existing compose. This is done by inspecting the signing keys used for generating the compose and performing a reverse mapping to determine the signing intent. If a match cannot be determined, the build will fail. Note that if given compose is expired or soon to be expired, OSBS will automatically renew it.

The `signing_intent` specified in `container.yaml` can be overridden with the build parameter of same name. This particular parameter will be ignored for autorebuilds. The value in `container.yaml` should always be used in that case. Note that the signing intent used by the compose of parent image is still taken into account which may lead to downgrading signing intent for the layered image.

The Koji build metadata will contain a new key, `build.extra.image.odcs.signing_intent_overridden`, to indicate whether or not the `signing_intent` was overridden (CLI parameter, automatically downgraded, etc). This value will only be `true` if `build.extra.image.odcs.signing_intent` does not match the `signing_intent` in `container.yaml`.

1.2.15 Base image builds

OSBS is able to create base images, and it does by creating Koji image-build task, importing its output as a new container image, then continuing to build using a Dockerfile that inherits from that imported image.

Each dist-git branch should have the following files:

- Dockerfile
- image-build.conf
- kickstart.ks (or any .ks name, but must match what image-build.conf references)

The Dockerfile should start “FROM koji/image-build”, and continue with LABEL and CMD etc instructions as needed.

The image-build.conf file should start “[image-build]” and set the target (for the image-build task), distro, and ksverison, for example:

```
[image-build]
target = f30
distro = Fedora-30
ksversion = Fedora
```

The image-build task will need to know where to find the kickstart configuration; it finds this from the ‘ksurl’ and ‘kickstart’ parameters in image-build.conf. If these are absent from the file in dist-git, atomic-reactor will provide defaults:

- kickstart: ‘kickstart.ks’
- ksurl: the dist-git URL and commit hash used for the OSBS build

In this way, the kickstart configuration can be placed in the dist-git repository as ‘kickstart.ks’ alongside the Dockerfile and image-build.conf files, and the correct git URL and commit hash will be recorded in Brew when the image is built. This is the recommended way of providing a kickstart configuration for base images.

Alternatively it can be stored elsewhere (perhaps another git repository) in which case a URL is needed. However, when doing this please make sure to use a git commit hash in the ‘ksurl’ parameter instead of a symbolic name (e.g. branch name); failure to do this means there will be no reliable way to discover the kickstart configuration used for the built image.

To execute base image build, run:

```
fedpkg container-build --target=<target> --repo=url=<repo-url>
```

The `--repo-url` parameter specifies the URL to a reprofile. The first section of this is inspected and the ‘baseurl’ is examined to discover the compose URL.

1.2.16 Multistage builds

Often users may wish to build an image directly from project sources (rather than intermediate build artifacts), but not include the sources or toolchain necessary for compiling the project in the final image. Multistage builds are a simple solution.

Multistage refers to container image builds with at least two stages in the Dockerfile; initial stage(s) provide a build environment and produce some kind of artifact(s) which in the final stage are copied into a clean base image. The most obvious signature of a multistage build is that the Dockerfile has more than one “FROM” statement. For example:

```
FROM toolchain:latest AS builder1
ADD .
RUN make artifact

FROM base:release
COPY --from=builder1 artifact /dest/
```

In most respects, multistage builds operate very similarly to multiple single-stage builds; the results from initial stage(s) are simply not tagged or used except by later `COPY --from` statements. Refer to [Docker multistage docs](#) for complete details.

In OSBS, multistage builds require using the **imagebuilder** plugin, which can be configured as the system default or per-image in `container.yaml`.

In a multistage build, yum repositories are made available in all stages. The build may have multiple parent builds, as each stage may specify a different image. The parent images FROM initial stages are pulled and rewritten similarly as the parent in the final stage (known as the “base image”). Note that ENV and LABEL entries from earlier stages do not affect later stages.

Note that the `COPY --from=<image>` form (with a full image specification as opposed to a stage alias) should not be used in OSBS builds. It works, but the image used is not treated as other parents are (rewritten, etc). To achieve the same effect, specify such images with another stage, for example:

```
FROM registry.example.com/image:tag AS source1
FROM base
COPY --from=source1 src/ dest/
```

1.2.17 Operator manifests

OSBS is able to extract `operator` manifests from an operator image. This image should contain a `/manifests` directory, whose content can be extracted to `koji` for later distribution.

To activate the operator manifests extraction from the image, you must set a specific label in your Dockerfile:

```
LABEL com.redhat.delivery.appregistry=true
```

When present (and set to `true`), this label triggers the atomic-reactor `export_operator_manifests` plugin. This plugin extracts the content from the `/manifests` directory in the built image and uploads it to `koji`. If the `/manifests` directory is either empty or not present in the image, the build will fail.

Since the operator manifests are not tied to any specific architecture, OSBS will decide from which worker build the manifests will be extract (and make sure only a single platform will upload the archive to `koji`). If, for some reason, you need to select which platform will extract and upload the manifests archive, you can set the `operator_manifests_extract_platform` build param to the desired platform.

[Backward compatibility] If the build succeeds, the `build.extra.operator_manifests_archive_koji` metadata will be set to the name of the archive containing the operator manifests (currently, `operator_manifests.zip`).

The operator manifests archive is uploaded to `koji` as a separate type: `operator-manifests` (currently with filename `operator_manifests.zip`).

After a successful build, if *OMPS integration* is enabled, operator manifests are uploaded into configured application registry and namespace.

Details on how operator manifest can be accessed from the application registry are stored in `koji` build, in section `build.extra.operator_manifests.appregistry`.

Manifests will not be pushed to the application registry for scratch builds, isolated builds, or re-builds to prevent unwanted changes

1.3 Understanding the Build Process

OSBS creates an OpenShift BuildConfig to store the configuration details about how to run atomic-reactor and which git commit to build from. If there is already a BuildConfig for the image (and branch), it is updated. Afterwards, a Build is instantiated from the BuildConfig.

The default OpenShift BuildConfig runPolicy of “Serial” is used, meaning only one Build will run at a time for a given BuildConfig, and other Builds will remain queued and unprocessed until the running build finishes. This is preferable to “SerialLatestOnly”, which cancels all but the most recent pending queued build, because build logs for any user-submitted build can be watched through to completion.

OSBS uses two types of OpenShift Build:

worker build for creating the container images

orchestrator build for creating and managing worker builds

The cluster which runs orchestrator builds is referred to here as the *orchestrator cluster*, and the cluster which runs worker builds is referred to here as the *worker cluster*.

Note that the orchestrator cluster itself may also be configured to accept worker builds, so the cluster may be both orchestrator and worker. Alternatively some sites may want separate clusters for these functions.

The orchestrator build makes use of *Server-side Configuration for atomic-reactor* to discover which worker clusters to direct builds to and whether/which *node selector* is required for each.

The separation of tasks between the orchestrator build and the worker build is called the “arrangement”.

Note: Arrangement versions lower than 6 are no longer supported (but each new version typically builds on the previous one, so no functionality is lost).

1.3.1 Arrangement version 1 (delegation)

This arrangement version is no longer supported.

In this arrangement, the orchestrator build chooses a worker cluster and creates a worker build in that cluster. From then on, the worker build performs all the tasks required.

Delegating this way allows for future features such as multi-platform builds (with multiple worker builds per orchestrator build) and automated triggered rebuilds (where the orchestrator cluster has complete knowledge of the latest build configurations and their triggers).

Orchestrator

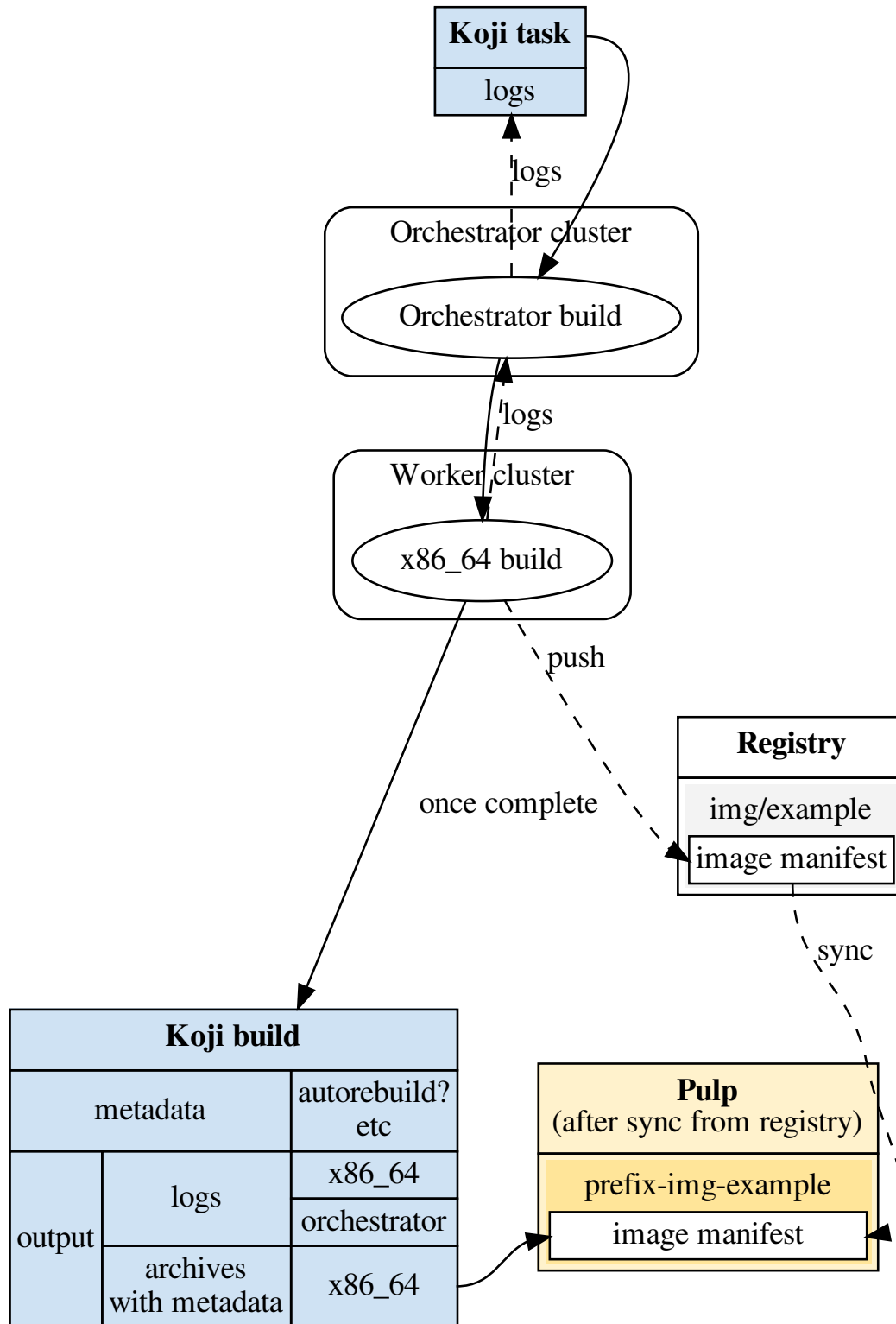
Steps performed by the orchestrator build are:

- For layered images:
 - pull the parent image in order to inspect environment variables (this is to allow substitution to be performed in the “release” label)
- Supply a value for the “release” label if it is missing and Koji integration is enabled (this value is provided to the worker build)
- Apply labels supplied via build request parameter to the Dockerfile
- Parse server-side configuration for atomic-reactor in order to know which worker clusters may be considered
- Create a worker build on one of the configured clusters, and collect logs and status from it
- Update this OpenShift Build with annotations about output, performance, errors, worker builds used, etc
- Perform any clean-up required:
 - For layered images, remove the parent image which was pulled at the start

Worker

The orchestration step will create an OpenShift build for performing the worker build. Inside this, atomic-reactor will execute these steps as plugins:

- Get (or create) parent layer against which the Dockerfile will run
 - For base images, the base image filesystem is created using Koji and imported as the initial image layer
 - For layered images, the FROM image is pulled from the source registry



- Supply a value for the “release” label if it is missing and Koji integration is enabled XXX seems wrong?
- Make various alterations to the Dockerfile
- Fetch any supplemental files required by the Dockerfile
- Build the container
- Squash the image so that only a single layer is added since the parent image
- Query the image to discover installed RPM packages (by running `rpm` inside it)
- Tag and push the image to the container registry
- Sync the image into Pulp from the container registry (if Pulp integration is enabled) and publish it – in this case the image is deleted from the container registry later
- Compress the docker image tar archive
- Pull the image back from the Pulp registry in order to accurately record its image ID (required because Pulp lacks support for v2 schema 2 manifests)
- If Koji integration is enabled, upload image tar archive to Koji and create a Koji Build
- Update this OpenShift Build with annotations about output, performance, errors, etc
- If Koji integration is enabled, tag the Koji build
- Send email notifications if required
- Perform any clean-up required:
 - Remove the parent image which was fetched or created at the start
 - If Pulp integration is enabled, delete the image from the container registry

1.3.2 Arrangement version 2 (orchestrator creates filesystem)

This arrangement version is no longer supported.

This arrangement, available since `osbs-client-0.41`, is identical to version 1 except that:

- There is a new plugin for verifying the parent image comes from a build that exists in Koji
- The `add_filesystem` plugin runs in the orchestrator build as well as the worker build. This is to create a single Koji “`image-build`” task to create filesystems for all required architectures.

In the worker build, the `add_filesystem` still runs but does not create a Koji task. Instead the orchestrator build tells it which Koji task ID to stream the filesystem tar archive from. Each worker build only streams the filesystem tar archive for the architecture it is running on.

1.3.3 Arrangement version 3 (Koji build created by orchestrator)

This arrangement version is no longer supported.

This arrangement builds on version 2. The `koji_promote` plugin, which was previously responsible for creating the Koji build, is replaced by these plugins:

- worker build
 - `koji_upload`
- orchestrator build
 - `fetch_worker_metadata` (see *Metadata Fragment Storage*)

- koji_import
- koji_tag_build

Additionally the `sendmail` plugin now runs in the orchestrator build and not the worker build.

1.3.4 Metadata Fragment Storage

When creating a Koji Build using arrangement 3 and newer, the `koji_import` plugin needs to assemble Koji Build Metadata, including:

- components installed in each builder image (worker builds and orchestrator build)
- components installed in each built image
- information about each build host

To assist the orchestrator build in assembling this (JSON) data, the worker builds gather information about their build hosts, builder images, and built images. They then need to pass this data to the orchestrator build. After creating the Koji Build, the orchestrator build must then free any resources used in passing the data.

The method used for passing the data from the worker builds to the orchestrator build is to store it temporarily in a ConfigMap object in the worker cluster. Its name is stored in the OpenShift Build annotations for the worker build. To do this the worker cluster’s “builder” service account needs permission to create ConfigMap objects.

The orchestrator build collects the metadata fragments and assembles them together with the platform-neutral metadata in the `koji_import` plugin.

The orchestrator build is then responsible for removing the OpenShift ConfigMap from the worker cluster. To do this, the worker cluster’s “orchestrator” service account needs permission to get and delete ConfigMap objects.

1.3.5 Arrangement version 4 (Multiple worker builds)

This arrangement version is no longer supported.

This arrangement moves most of the Pulp integration work to the orchestrator build, allowing for multiple worker builds. Only the `pulp_push` plugin remains in the worker build.

A new plugin, `group_manifests`, creates a `manifest list` object in the registry, grouping together the image manifests from the worker builds.

1.3.6 Arrangement version 5 (ODCS Integration)

This arrangement version is no longer supported.

This arrangement builds on version 4. The `resolve_composes` plugin enables integration with `odcs`. See *ODCS compose* for details.

- worker build
 - No changes
- orchestrator build
 - `resolve_composes`

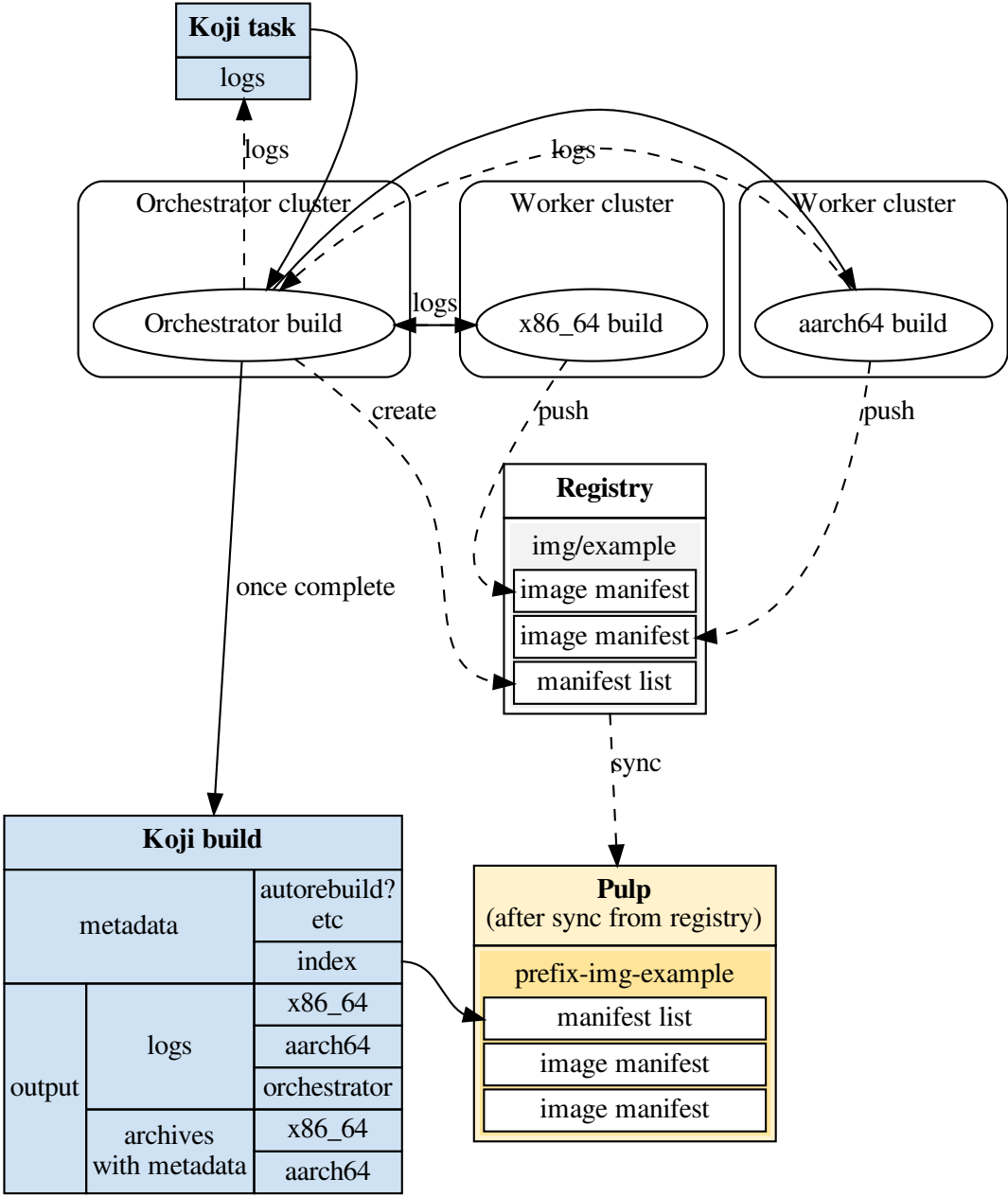


Fig. 2: Orchestrator and worker builds (arrangement v4)

1.3.7 Arrangement Version 6 (reactor_config_map)

In this arrangement version, environment parameters are provided by **reactor_config**. The order of plugins is the same, but hard coded, or placeholder, environment parameters in **orchestrator_inner** and **worker_inner** json files change.

An osbs-client configuration option **reactor_config_map** is required to define the name of the `ConfigMap` object holding **reactor_config**. This configuration option is mandatory for arrangement versions greater than or equal to 6. The existing osbs-client configuration **reactor_config_secret** is deprecated (for all arrangements).

For more details on how the build system is configured as of Arrangement 6, consult the *Build Parameters* document.

1.3.8 Logging

Logs from worker builds is made available via the orchestrator build, and clients (including koji-containerbuild) are able to separate individual worker build logs out from that log stream using an osbs-client API method.

Multiplexing

In order to allow the client to de-multiplex logs containing a mixture of logs from an orchestrator build and from its worker builds, a special logging field, `platform`, is used. Within atomic-reactor all logging goes through a `LoggerAdapter` which adds this `platform` keyword to the `extra dict` passed into logging calls, resulting in log output like this:

```
2017-06-23 17:18:41,791 platform:- - atomic_reactor.foo - DEBUG - this is from the_
↪orchestrator build
2017-06-23 17:18:41,791 platform:x86_64 - atomic_reactor.foo - INFO - 2017-06-23_
↪17:18:41,400 platform:- atomic_reactor.foo - DEBUG - this is from a worker build
2017-06-23 17:18:41,791 platform:x86_64 - atomic_reactor.foo - INFO - continuation_
↪line
```

Demultiplexing is possible using a the osbs-client API method, `get_orchestrator_build_logs`, a generator function that returns objects with these attributes:

platform str, platform name if worker build, else None

line str, log line (Unicode)

See the example below for what this would look like for these sample log lines.

See the example below to see this illustrated.

Encoding issues

When retrieving logs from containers, the text encoding used is only known to the container. It may be based on environment variables within that container; it may be hard-coded; it may be influenced by some other factor. For this reason, container logs are treated as byte streams.

This applies to:

- containers used to construct the built image
- the builder image running atomic-reactor for a worker build
- the builder image running atomic-reactor for an orchestrator build

When retrieving logs from a build, OpenShift cannot say which encoding was used. However, atomic-reactor can define its own output encoding to be UTF-8. By doing this, all its log output will be in a known encoding, allowing osbs-client to decode it. To do this it should call `locale.setlocale(locale.LC_ALL, "")` and the Dockerfile used to create the builder image must set an appropriate environment variable:

```
ENV LC_ALL=en_US.UTF-8
```

Orchestrator builds want to retrieve logs from worker builds, then relay them via logging. By knowing that the builder image for the worker is the same as the builder image for the orchestrator, we also know the encoding for those logs to be UTF-8.

Example

Here is an example Python session demonstrating this interface:

```
>>> server = OSBS(...)
>>> logs = server.get_orchestrator_build_logs(...)
>>> [(item.platform, item.line) for item in logs]
[(None, '2017-06-23 17:18:41,791 platform:- - atomic_reactor.foo - DEBUG - this is_
↳from the orchestrator build'),
 ('x86_64', '2017-06-23 17:18:41,400 atomic_reactor.foo - DEBUG - this is from a_
↳worker build'),
 ('x86_64', 'continuation line')]
```

Note:

- the lines are (Unicode) string objects, not bytes objects
- the orchestrator build's logging fields have been removed from the worker build log line
- the "outer" orchestrator log fields have been removed from the worker build log line, and the `platform:-` field has also been removed from the worker build's log line
- where the worker build log line had no timestamp (perhaps the log line had an embedded newline, or was logged outside the adapter using a different format), the line was left alone

1.3.9 Autorebuilds

OSBS's autorebuild feature automatically starts new builds of layered images whenever the base parent image changes. This is particularly useful for image owners that maintain a large hierarchy of images, which would otherwise require manually starting each image build in the correct order. Instead, image owners can start a build for the topmost ancestor which upon completion triggers the next level of layered images, and so on.

Builds may opt in to autorebuilds with an *autorebuild* entry in the *dist-git* configuration.

1.4 Build Parameters

1.4.1 Environment vs User Parameters

atomic-reactor requires various parameters to build container images. These range from the Koji Hub URL to git commit. We can categorize them into environment and user parameters. The main difference between them is how they are reused. Environment parameters are shared by different build requests, while user parameters are unique to each build request.

Environment parameters are used for configuring usage of external services such as Koji, Pulp, ODCS, SMTP, etc. They are also used for controlling some aspects of the container images built, for example, distribution scope, vendor, authoritative-registry, etc. These may change over time as the environment changes.

User parameters contain the unique information for a user's build request: git repository, git branch, Koji target, etc. These should be reused for autorebuilds and are not affected by environment changes.

1.4.2 Reactor Configuration

As of Arrangement 6, environment configuration is provided to build containers in a way that is less coupled to the Build/BuildConfig objects. The pre-build plugin `reactor_config` determines and provides all environment configuration to other plugins.

Previously, the value of `reactor_config` was mounted into container as a secret. With Arrangement 6 it is supplied as a ConfigMap like:

```
apiVersion: v1
kind: ConfigMap
data:
  "config.yaml": <encoded yaml>
```

For an orchestrator build, the ConfigMap is mapped via the downward API into the **REACTOR_CONFIG** environment variable in a build container. When the BuildConfig is instantiated, OpenShift selects the ConfigMap with name given in **reactor-config-map**, retrieves the contents of the key **config.yaml**, and sets it as the value of the **REACTOR_CONFIG** environment variable in the build container.

For worker builds, the **REACTOR_CONFIG** environment variable is defined as an inline **value** (via the **reactor_config_override** build parameter in `osbs-client`). To populate this parameter, the `orchestrate_build` plugin uses the `reactor_config` plugin to read the reactor configuration for the orchestrator build, using it as the basis of the reactor configuration for worker builds with the following modifications:

- **openshift** section is replaced with worker specific values. These values can be read from the `osbs-client Configuration` object created for each worker cluster.
- **worker_token_secrets** is completely removed. This section is intended for orchestrator builds only.

The schema definition `config.json` in `atomic-reactor` contains a description for each property.

Example of **REACTOR_CONFIG**:

```
version: 1

clusters:
  x86_64:
    - name: x86_64-worker-1
      max_concurrent_builds: 15
      enabled: True
    - name: x86_64-worker-2
      max_concurrent_builds: 6
      enabled: True

clusters_client_config_dir: /var/run/secrets/atomic-reactor/client-config-secret

koji:
  hub_url: https://koji.example.com/hub
  root_url: https://koji.example.com/root
  auth:
    ssl_certs_dir: /var/run/secrets/atomic-reactor/kojisecret
```

(continues on next page)

(continued from previous page)

```
use_fast_upload: false

pulp:
  name: my-pulp
  auth:
    ssl_certs_dir: /var/run/secrets/atomic-reactor/pulpsecret

odcs:
  api_url: https://odcs.example.com/api/1
  auth:
    ssl_certs_dir: /var/run/secrets/atomic-reactor/odcssecret
  signing_intents:
    - keys: ['R123', 'R234']
      name: release
    - keys: ['B123', 'B234', 'R123', 'R234']
      name: beta
    - keys: []
      name: unsigned
  default_signing_intent: release

smtp:
  host: smtp.example.com
  from_address: osbs@example.com
  error_addresses:
    - support@example.com
  domain: example.com
  send_to_submitter: True
  send_to_pkg_owner: True

pdc:
  api_url: https://pdc.example.com/rest_api/v1

arrangement_version: 6

artifacts_allowed_domains:
- download.example.com/released
- download.example.com/candidates

image_labels:
  vendor: "Spam, Inc."
  authoritative-source-url: registry.public.example.com
  distribution-scope: public

image_equal_labels:
- [description, io.k8s.description]

openshift:
  url: https://openshift.example.com
  auth:
    enable: True
  build_json_dir: /usr/share/osbs/

group_manifests: False

platform_descriptors:
- platform: x86_64
  architecture: amd64
```

(continues on next page)

(continued from previous page)

```

content_versions:
- v2

registries:
- url: https://container-registry.example.com/v2
  auth:
    cfg_path: /var/run/secrets/atomic-reactor/v2-registry-dockercfg

source_registry:
  url: https://registry.private.example.com

sources_command: "fedpkg sources"

required_secrets:
- kojisecret
- pulpsecret
- odcsecret
- v2-registry-dockercfg
- client-config-secret

worker_token_secrets:
- x86-64-worker-1
- x86-64-worker-2

default_image_build_method: imagebuilder

skip_koji_check_for_base_image: False

```

1.4.3 Atomic Reactor Plugins and Arrangement Version 6

Prior to Arrangement 6, atomic-reactor plugins received environment parameters as their own plugin parameters. Arrangement 6 was introduced to indicate that plugins should retrieve environment parameters from **reactor_config** instead. Plugin parameters that are really environment parameters have been made optional.

The osbs-client configuration **reactor_config_map** defines the name of the `ConfigMap` object holding **reactor_config**. This configuration option is mandatory for arrangement versions greater than or equal to 6. Previous osbs-client configuration **reactor_config_secret** is deprecated.

An osbs-client build parameter **reactor_config_override** allows reactor configuration to be passed in as a python dict. It is also validated against `config.json` schema. When both **reactor_config_map** and **reactor_config_override** are defined, **reactor_config_override** takes precedence. NOTE: **reactor_config_override** is a python dict, not a string of serialized data.

1.4.4 Creating Builds

osbs-client no longer renders the atomic-reactor plugin configuration at `Build` creation. Instead, the **USER_PARAMS** environment variable is set on the `Build` containing only user parameters as JSON. For example:

```

{
  "build_type": "orchestrator",
  "git_branch": "my-git-branch",

```

(continues on next page)

(continued from previous page)

```
"git_ref": "abc12",
"git_uri": "git://git.example.com/spam.git",
"is_auto": False,
"isolated": False,
"koji_task_id": "123456",
"platforms": ["x86_64"],
"scratch": False,
"target": "my-koji-target",
"user": "lcarva",
"yum_repourls": ["http://yum.example.com/spam.repo", "http://yum.example.com/
↪bacon.repo"],
}
```

1.4.5 Rendering Plugins

Once the build is started, control is handed over to `atomic-reactor`. Its input plugin `osv3` looks for the environment variable `USER_PARAMS` and uses the `osbs-client` method `render_plugins_configuration` to generate the plugin configuration on the fly. The generated plugin configuration contains the order in which plugins will run as well as user parameters.

1.4.6 Secrets

Because the plugin configuration renders at build time (after `Build` object is created), we cannot select which secrets to mount in container build based on which plugins have been enabled. Instead, all the secrets that may be needed must be mounted. The `reactor_config` `ConfigMap` defines the full set of secrets it needs via its `required_secrets` list.

When orchestrator build starts worker builds, it uses the same set of secrets. This requires worker clusters to have the same set of secrets available. For example, if `reactor_config` defines:

```
required_secrets:
- kojisecret
- pulpsecret
```

Secrets named `kojisecret` and `pulpsecret` must be available in orchestrator and worker clusters. They don't need to have the same value, just the same name. For instance, worker and orchestrator builds may use different authentication certificates.

Secrets needed for communication from orchestrator build to worker clusters are defined separately in `worker_token_secrets`. These are not passed along to worker builds.

1.4.7 Site Customization

The site customization configuration file is no longer read from the system creating the OpenShift `Build` (usually `koji` builder). Instead, this customization file must be stored and read from inside the builder image.

1.5 Contributing to OSBS

1.5.1 Setting up a (local) development environment

1.5.2 Contribution guidelines

Submitting changes

Changes are accepted through pull requests. If you want to implement major new functionality, we'd like to ask you to open a bug with proposal to discuss it with us. We're nice folks and we don't bite – we just want to see what you're up to and a chance to give some suggestions to save your time as well as ours.

Please create your feature branch from the master branch. Make sure to add unit tests under the tests/ subdirectory (we use py.test and flexmock for this). When you push new commits, tests will be triggered to be run in Travis CI and results will be shown in your pull request. You can also run them locally from the top directory (py.test tests). You can also use the test.sh script to run these tests in a container.

Follow the PEP8 coding style. This project allows 99 characters per line.

Please make sure each commit is for a complete logical change, and has a useful commit message. When making changes in response to suggestions, it is fine to make new commits for them but please make sure to squash them into the relevant “logical change” commit before the pull request is merged.

Before a pull request is approved it must meet these criteria:

- Commit messages are descriptive enough
- “Signed-off-by:” line is present in each commit
- Unit tests pass
- Code coverage from testing does not decrease and new code is covered
- JSON/YAML configuration changes are updated in the relevant schema
- Changes to metadata also update the documentation for the metadata
- Pull request includes link to an osbs-docs PR for user documentation updates
- New feature can be disabled from a configuration file

Once it is approved by two developer team members someone from the team will merge it. To avoid creating merge commits the pull request will be rebased during the merge.

Licensing

This project is licensed using the BSD-3-Clause license. When submitting pull requests please make sure your commit messages include a signed-off-by line to certify the below text:

```
Developer's Certificate of Origin 1.1
```

```
By making a contribution to this project, I certify that:
```

- ```
(a) The contribution was created in whole or in part by me and I
 have the right to submit it under the open source license
 indicated in the file; or
```
- ```
(b) The contribution is based upon previous work that, to the best  
    of my knowledge, is covered under an appropriate open source
```

(continues on next page)

(continued from previous page)

license **and** I have the right under that license to submit that work **with** modifications, whether created **in** whole **or in** part by me, under the same **open** source license (unless I am permitted to submit under a different license), **as** indicated **in** the file; **or**

- (c) The contribution was provided directly to me by some other person who certified (a), (b) **or** (c) **and** I have **not** modified it.
- (d) I understand **and** agree that this project **and** the contribution are public **and** that a record of the contribution (including all personal information I submit **with** it, including my sign-off) **is** maintained indefinitely **and** may be redistributed consistent **with** this project **or** the **open** source license(s) involved.

You can do this by using `git commit -signoff` when committing changes, making sure that your real name is included.

Code policies

Retry on error

Requests to a remote service should be retried if the failure is not definitely permanent.

In most cases there should be a delay before retrying. The only reason to retry immediately is when the request is likely to succeed when immediately retried (i.e. the cause is known). An example would be retrying a PUT operation which was rejected due to conflicts.

There should be a maximum number of attempts before giving up and reporting an exception.

The delay and the maximum number of attempts should both be configurable if feasible. If not explicitly configured and an HTTP request to be retried included a Retry-After header in the response, the Retry-After header should be used to set the delay time.

When alternate remote services are available, retries should only be attempted if no alternates succeed. For example, when selecting a worker cluster a failure should immediately result in the next worker cluster being tried. If there is no such cluster, or all configured worker clusters fail, retries should be attempted, including a delay if appropriate (depending on the failure).

There should only be a single “level” of retry logic, unless there is a good reason. For example, if dockpulp implements retry logic for one of its operations, atomic-reactor should not retry that operation (unless it makes sense to). In other words: be aware of which calls implicitly retry.

1.6 Documentation of the OSBS tools

1.6.1 Koji Containerbuild

Extends Koji buildsystem with plugins to allow building containers via OpenShift.

Provides plugin to submit builds with koji CLI.

- [Installation and usage instructions](#)
- [General concepts behind container build architecture](#)

1.6.2 Atomic Reactor

Python library with command line interface for building docker images.

- Installation and Usage Instructions
- Building Base Images
- Plugins
- build.json

1.6.3 OSBS Client

Python module and command line client for OpenShift Build Service.

- Basic configuration and usage
- Description of the Build Process
- Configuration file

1.6.4 dockpulp

ReST API Client to Pulp for manipulating docker images.

- Installation and Usage

1.6.5 Ansible Playbook

- Ansible playbook for deploying OpenShift Build Service

1.6.6 Deploying and Running OSBS

- Deploying OpenShift Build System
- OSBS Backups
- Local Development
- Resource limiting

CHAPTER 2

Indices and tables

- `genindex`
- `search`